

# *Dearborn County Trails Report*

---



August 2020

---



---

# Introduction

Today, for millions of Americans, multi-use trails are the link to relaxation and exercise in the great outdoors. Carefully planned trail systems offer opportunities for affordable recreation and transportation while preserving open space. They provide venues for health and wellness activities. And they contribute to the economic vitality of cities and towns of all sizes. In short, communities with vibrant walking and biking trails are better places to live.

In its 2019 Outdoor Participation Report, the Outdoor Foundation found that more than half of the US Population participated in outdoor recreation at least once during 2018. Of those participants, 63.3% report they recreate within 10 miles of their home. The report further documented the most popular outdoor outings by participation rate are: #1- Running, jogging or trail running; #2 – Fishing; and #3 – Cycling. With more than 57 million Americans participating in trail activities every year, having a close to home trail system is a critical component for growing communities.

In November 2018 One Dearborn Inc. unveiled its [Regional Economic Development Action Plan for Dearborn County](#). This forward-looking report boldly identified “*The Big 8 Economic Development Drivers*” that will steer Dearborn County’s success into the future. Three of these “*Drivers*”- *Trail Connectivity, Downtown Redevelopment and Tourism & Culture* draw inspiration from the concept that *quality of place* matters for communities to thrive in the 21<sup>st</sup> Century. This report is a direct outcome from the 2018 Regional Economic Development Action Plan as it continues the conversation related to Trail Connectivity in the region.

Well planned pedestrian and bicycle trails provide healthy recreation opportunities for area residents. The Centers for Disease Control and Prevention (CDC), have long advocated the health benefits of physical activity. For example, the CDC recommends that children and adolescents

---

do 60 minutes (1 hour) or more of physical activity each day and adults do 150 minutes (2 and a half hours) of aerobic activity every week. According to CDC, having access to places for physical activity, such as parks and trails, encourages community residents to participate in physical activity and do so more often.

Multi-use trails can also enhance property values and play important supportive roles to Downtown Redevelopment and Tourism & Culture. According to the National Park Service's Rivers, Trails and Conservation Assistance Program, studies in Denver, Seattle, Minnesota, and other communities across the country have consistently found that proximity to trails increases the value of homes from 1% up to 6.5%. In 2011, the University of Cincinnati published a research paper entitled, "*Understanding the Impact of Trails on Residential Property Values...*" In this study, Olivier Parent and Rainer vom Hofe carefully researched residential property values in close proximity to the Little Miami Scenic Trail near Mariemont, Ohio. Their conclusions showed that multi-purpose trails have a significant positive influence on the price of houses when they lie within close proximity to the trail.

## Purpose and Overview

The purpose of this report is to document the status of trails and trail planning initiatives in Dearborn County as they occur in 2020. The emphasis of the report focuses on trail initiatives that connect communities within the County to each other and to the surrounding region. This report also serves as the platform for embarking on future trail projects including a Comprehensive Trails Master Plan for Dearborn County. Trail master plans enable community leaders to prioritize resource allocation decisions for new trails and rehabilitation projects in a manner that is fiscally responsible, environmentally sound, publicly supported, and politically prudent.

---

# Process

During the inventory and data gathering phase of this study, 19 meetings and interviews were conducted with 23 community leaders throughout the Dearborn County region. Due to the Covid-19 restrictions in place during this project, these meetings consisted of telephone calls, video conference calls and in-person meetings. More than 68 trail related documents including comprehensive community plans, vision plans, trail maps, concepts, and studies were reviewed. Communities and organizations that participated in the data gathering phase included:

Dearborn County  
Lawrenceburg  
Greendale  
Aurora  
Dillsboro  
Moores Hill  
Hidden Valley Lake  
West Harrison  
Franklin County, Indiana  
Ohio County / Rising Sun, Indiana  
Ripley County, Indiana  
Hamilton County, Ohio  
Tri-State Trails  
Ohio-Kentucky-Indiana Regional Council of Governments

# Findings

Overall, Dearborn County and especially its river cities of Lawrenceburg, Greendale and Aurora have a growing interest and support for multi-use trails. There are nearly 8 miles of paved trails currently serving the public throughout the county. The most prominent of which is the Dearborn Trail. This linear path is envisioned to provide an uninterrupted trail network connecting Greendale, Lawrenceburg, and Aurora from the state line near Elizabethtown, Ohio to the Dearborn County / Ohio County line at Laughery Creek. Approximately 5.6 miles of this trail system is complete and enjoys active use throughout the year. Additionally, the cities of Greendale, Aurora and Dillsboro offer loop style paved walking trails within their respective park and recreation complexes.

---

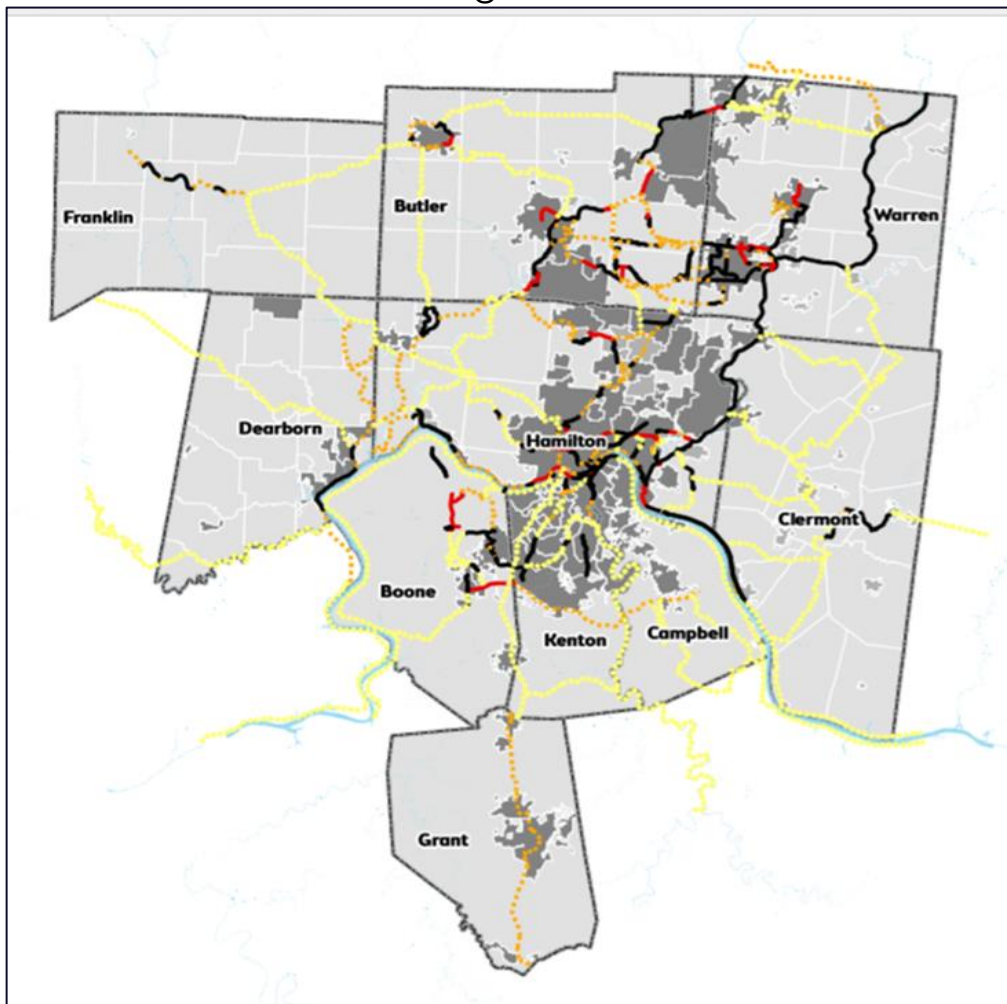
Residents of the Hidden Valley Lake community enjoy 2.5 miles of natural hiking trails as part of their recreation complex. And the Dearborn County Park Board manages five county parks, three of which offer walking paths and hiking opportunities.

## Context

Trail planning and development in Dearborn County is occurring simultaneous to other trail initiatives at the regional, state, federal and local levels.

### From a Regional Point of View

Dearborn County is poised to serve as the link connecting the Greater Cincinnati trail community to Central Indiana. The 2014 Regional Trails Plan prepared by Tri-State Trails documents trail initiatives under consideration throughout the Greater Cincinnati Region at that time.



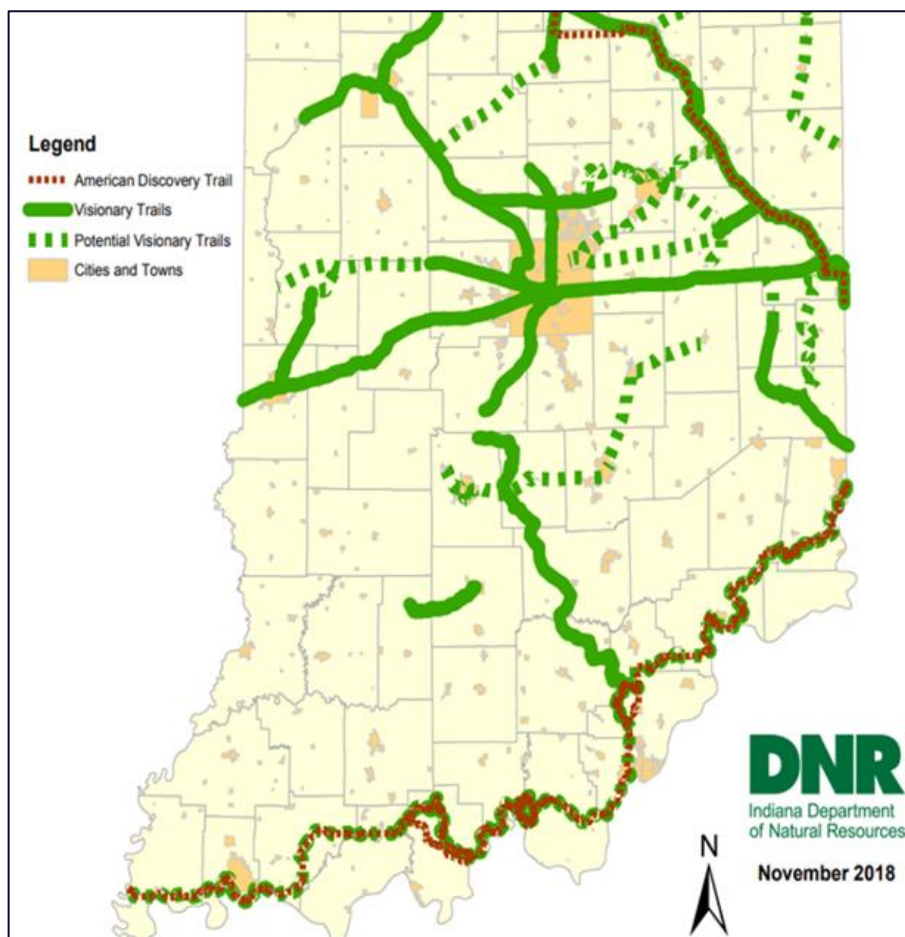
Tri-State Trails Regional Trails Plan - 2014

## From a State-wide Point of View

Two visionary trail corridors impacting Dearborn County have been identified by the Indiana Department of Natural Resources Division of Outdoor Recreation in its 2016 Indiana State Trails Plan. These include the American Discovery Trail and the Whitewater River Corridor trail.

**American Discovery Trail** is a nation-wide bicycle route connecting the Pacific Ocean to the Atlantic Ocean. Two routes navigate through the mid-west with the southern route following the Laughery Creek Corridor in southern Dearborn county.

**The Whitewater River Corridor Trail** is an *Indiana Visionary Trail* which links Fayette County to Franklin and Dearborn Counties following the Whitewater River corridor. The proposed route from Brookville to West Harrison also parallels the I&O railroad owned by the Genessee & Wyoming railroad. This section of railroad is currently inactive and in disrepair.



## From a National Point of View

Dearborn County is also uniquely situated near the midpoint of the Ohio River Recreation Trail. The vision of the Ohio River Recreation Trail is to create a 274-mile land and waterway self-guided adventure trail that connects people to opportunities for outdoor adventure, recreation and discovery on and along the Ohio River from Portsmouth, Ohio to West Point, Kentucky. It will serve to promote tourism and economic development; facilitate education about the valley's unique history, culture, and beauty; and promote environmental awareness and safety, respecting lands and waters with a "Leave No Trace" ethic. The trail can be enjoyed from either land or water by paddlers, power boaters, cyclists, motorists, hikers, etc.

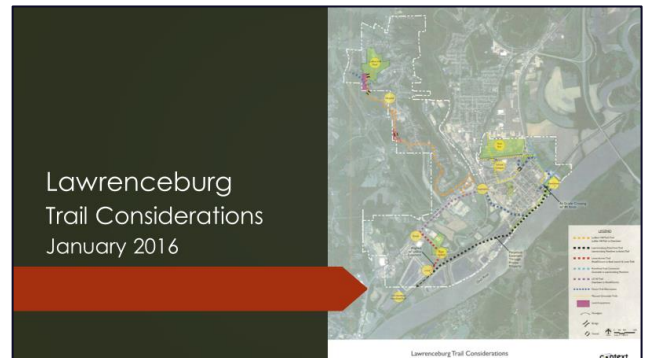


## Ohio River Recreation Trail

**Trail Projects within Dearborn County**-The following is an overview of trails and trail initiatives currently underway by various communities within the county:

## Lawrenceburg

**Lawrenceburg**- In 2015 & 2016 the City of Lawrenceburg engaged Context Design to review alternative trail ideas for the community.



**The Riverfront Trail** is a component of the Dearborn Trail that serves as the "backbone" trail in Dearborn County



**Lawrenceburg's Riverfront Trail**



**Lawrenceburg's Riverfront Trail Connector** is currently under consideration for the City's next trail project

## Riverfront Trail Connector

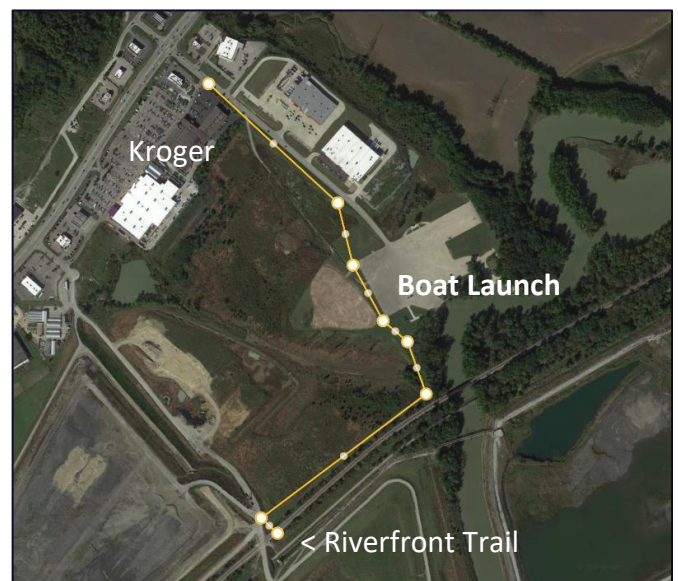
Link Greendale Trail to end of Levee at Casino  
+/- 0.6 miles



**The Levee Access Trail** is also under consideration for a future project

## Levee Access Trail

Link Riverfront Trail to Boat Launch & US 50 Business Center (Kroger & Post Office)  
+/- 0.9 miles



**The City of Lawrenceburg** previously considered two other trail projects as shown below. These trail concepts are no longer considered economically feasible

## Ludlow Hill Park Trail

Link US 50 Trail at Tanners Creek to Ludlow Hill Park

+/- 3 miles

(No longer considered feasible)



## US 50 Trail

Link US 50 Business Center (Kroger & Post Office) to Downtown Riverfront Trail via Proximo Levee

+/- 2 miles

(No longer considered feasible)



# Lawrenceburg

**The Key Gap** to be further studied is the connection of the proposed Riverfront Connector Trail (linking to the Greendale Trail) and Lawrenceburg's Riverfront Trail. This short but critical connection is extremely challenging due to multiple property ownership within the corridor, as well as dynamic land use priorities and regulatory requirements. Critical Stakeholders within this +/- 1,000' corridor include: Hollywood Casino, CSX Railroad, Lawrenceburg Conservancy District, US Army Corps of Engineers, and the City of Lawrenceburg.

## Linking the Levees

Link Greendale Trail to Riverfront Trail  
+/- 0.2 miles



# Greendale

**Greendale** has approximately 1.85 miles of existing paved multiuse trail including the 1.2-mile Greendale Levee Trail that overlooks the scenic Oxbow Conservation Area and serves as the eastern “leg” of the Dearborn Trail.



## Greendale Levee Trail

+/- 1.2 miles

## Schnebel Park Trail

+/- 0.4 miles

## Greendale Park Trail

+/- 0.25 miles



**Greendale-** Greendale also engaged Context Design to assist with trail planning in 2015 & 2016. Eight individual trail route alternatives were studied to provide trail connectivity throughout the community

**Greendale Trial Studies**-The following eight trail alignments studied by Context Design include approximately 10 miles of potential trail corridor.

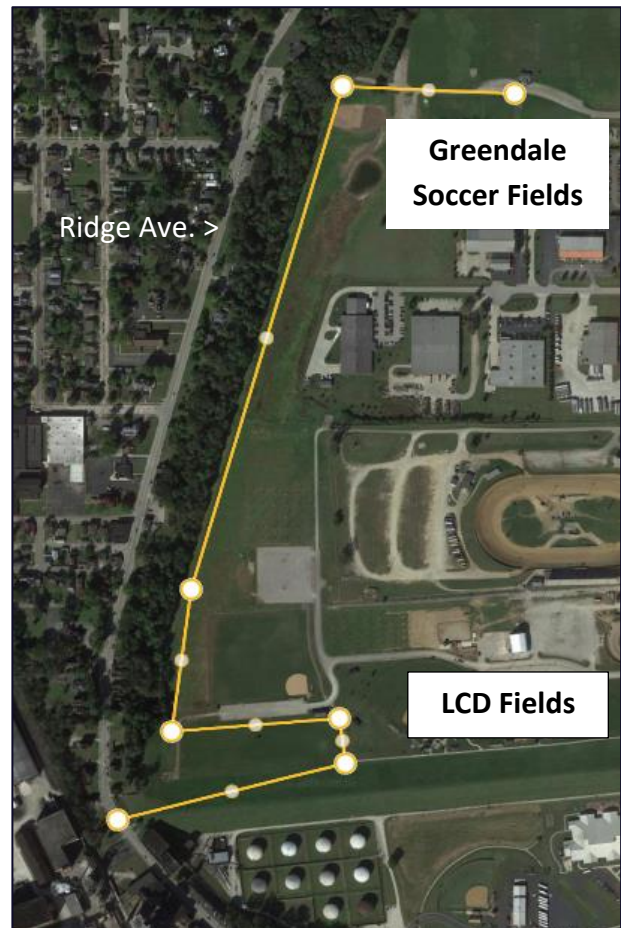
**Trail 01**

Currently Planned & Budgeted  
Priority 1

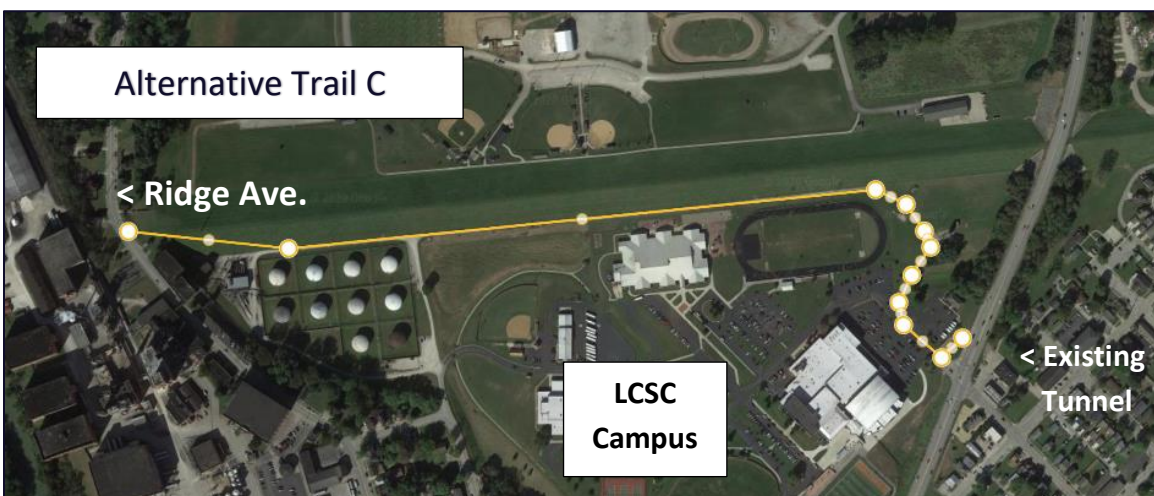
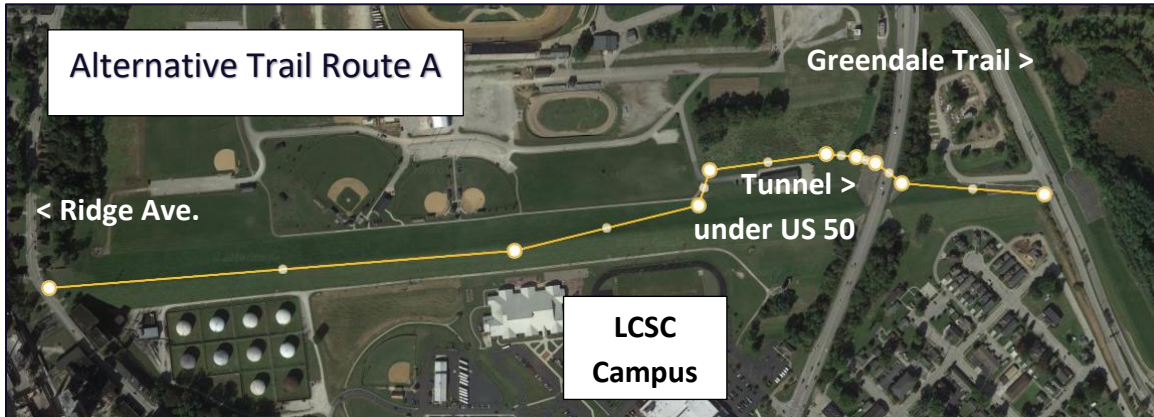
Greendale Connection to Lawrenceburg

Phase 1- Ridge Avenue to LCD Fields and Greendale Soccer Fields

+/- 1 mile



**Trail 02** - Alternative Trail Routes A & B connecting Ridge Avenue to the Greendale Trail are not considered economically feasible. Alternative Trail Route C connects Ridge Avenue to the City of Lawrenceburg's street grid.



**Trail 03 – I-275 / US 50 Crossing**

Connect Greendale Trail to  
Oberting Road  
+/- 1.3 miles



**Note:** The illustration for the proposed bike / pedestrian bridge shown above was developed in 2015 as part of a community visioning process. Further engineering studies are needed to determine final design, construction costs and project feasibility.

**Trail 04-**

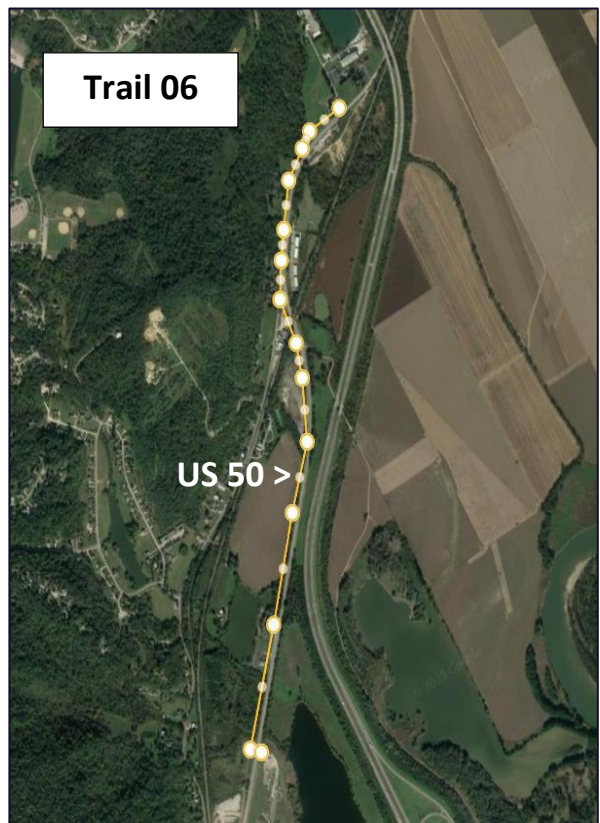
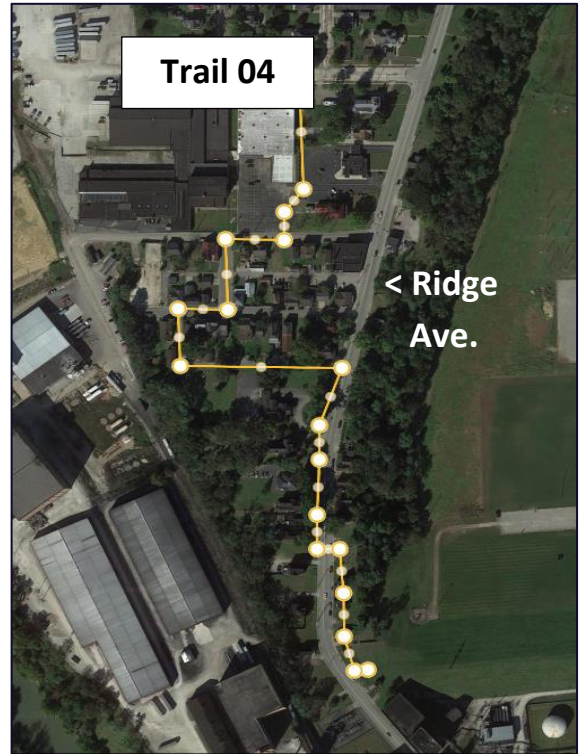
Ridge Avenue Trail  
+/- 0.3 miles

**Trail 05-**

Oberting Road  
+/- 2.1 miles

**Trail 06-**

US 50 Connection to Ohio state  
line & potential linkage to trails  
in Hamilton County, Ohio  
+/- 1.8 miles



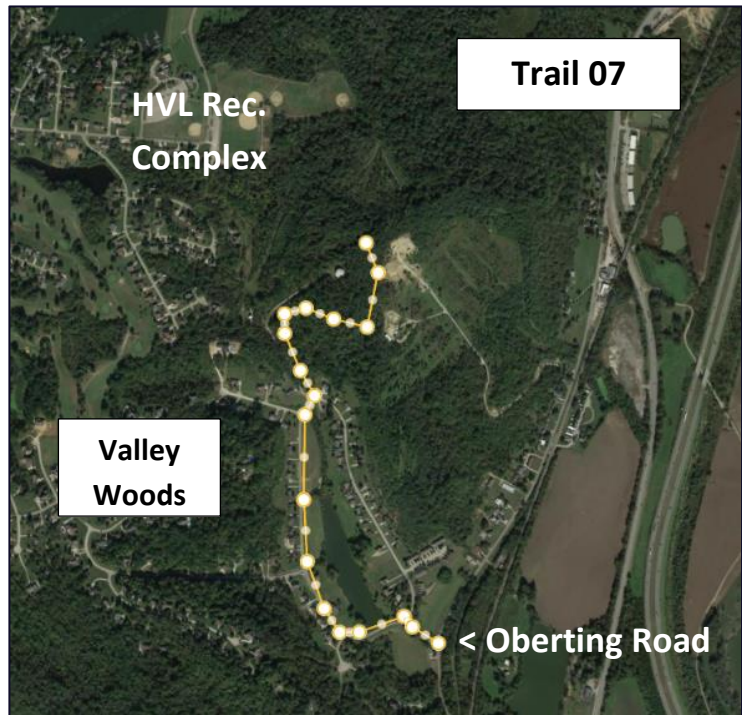


**Trail 07-**

Connection to Hidden Valley Lake

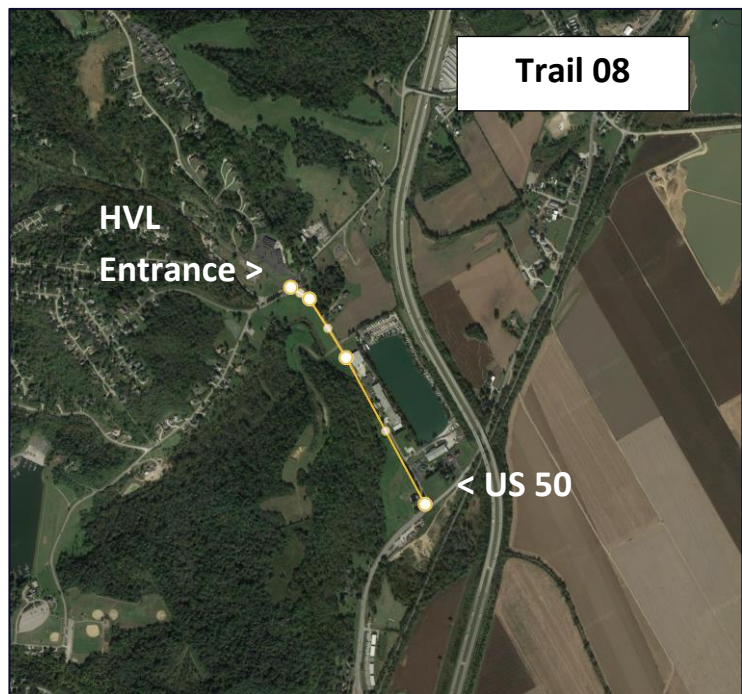
From Oberting Road

+/- 1.3 miles



**Trail 08-  
State Line Road Trail**

Connect US 50 to HVL Entrance at Old Stephens Road & potential linkage to trails in Hamilton County, Ohio  
+/- 0.6 miles

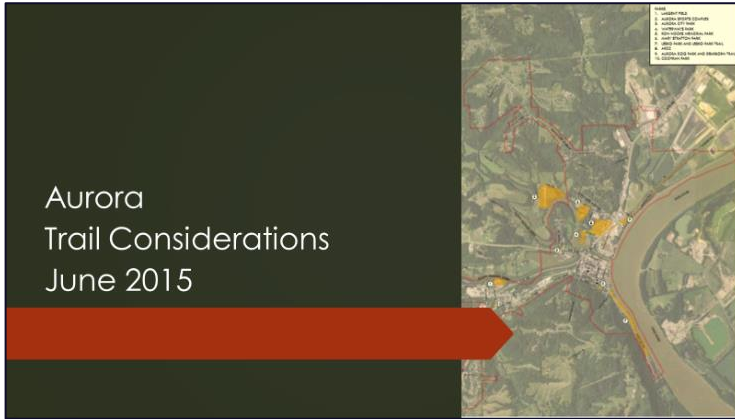


# Greendale

**Greendale's Key Gap** is the 0.7-mile section of proposed trail that would connect Ridge Avenue to the Lawrenceburg Community School Corporation campus and the existing tunnel under US 50.



# Aurora



**Aurora-** In 2015 the City of Aurora completed its most recent Comprehensive Plan Update. This update along with the City's Five Year Parks Master Plan 2017 – 2021 demonstrate the important role parks and trails play in the community.

**Aurora** enjoys 2.5 miles of multi-use trail including the southern terminus for the Dearborn Trail at Lesko Park.

## Dearborn Trail (North Segment)

+/- 1.4 miles

## Dearborn Trail (Lesko Park)

+/- 0.8 miles

## ARCC Field Loop Trail

+/- 0.3 miles

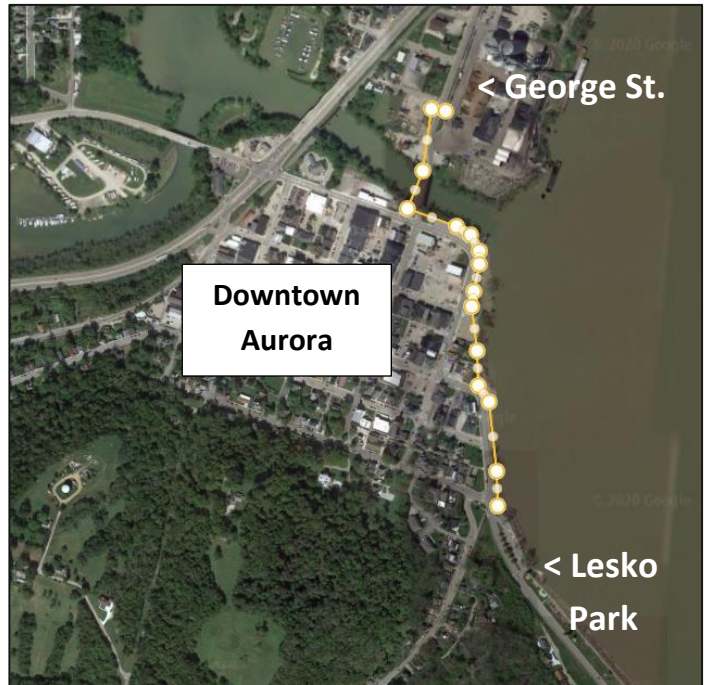


**Previously Studied Alignments** - The following are Aurora trail connections that have been identified for future consideration.

**Downtown Connector**

**Trail Alternative 1**

George St. to Lesko Park  
as Per Aurora Riverfront  
Vision Plan  
+/- 0.5 miles



**Downtown Connector**

**Trail Alternative 2**

George St. to Lesko Park  
via Main St. to 4<sup>th</sup> St. to SR 56  
+/- 0.5 miles



## Aurora

### Concepts for Future Consideration

#### West Side of US 50 Connector

George St. to Waterways Park & ARCC Fields under US 50 at Hogan Creek

+/- 0.4 miles

#### City Parks Connector Trail

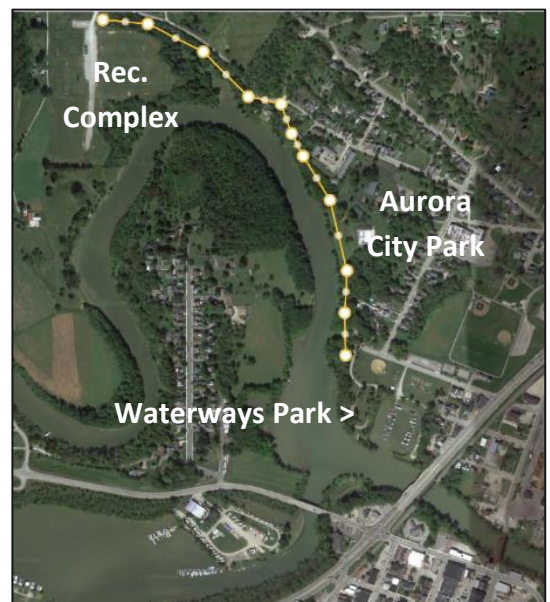
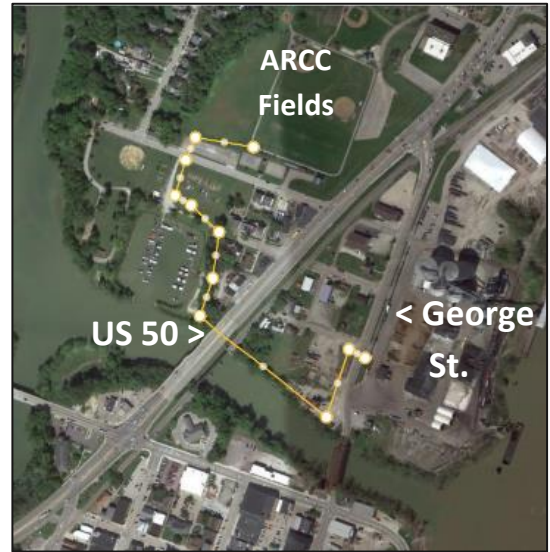
Waterways Park to Aurora City Park  
To Aurora Recreation Complex

+/- 0.75 miles

#### West Side Connector Trail

Main Street to Hanover Avenue via  
Importing St. & SR 350

+/- 0.5 miles



## Aurora

**Aurora's Key gap** is the 0.5 mile section of proposed trail that would link the Dearborn Trail at George Street to the southern section of the Dearborn Trail in Lesko Park. This proposed project is identified in Aurora's 2016 Riverfront Vision Plan.

### Downtown Connector

Linking the Dearborn Trail at George St to the Dearborn Trail at Lesko Park  
+/- 0.5 miles

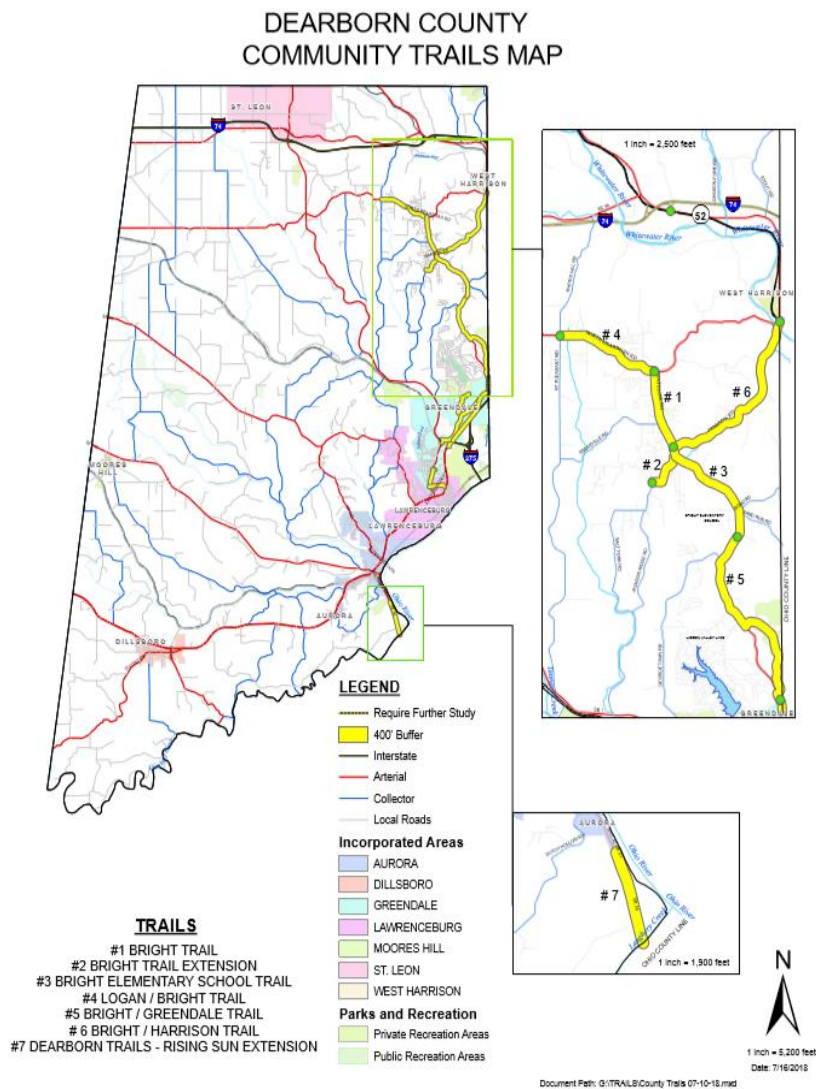
2016

### Aurora Riverfront Vision Plan

This plan proposes a segregated bike path along the river's edge incorporating a sheet piling retaining wall



**Dearborn County's Community Trails Plan** prepared by The Dearborn County Planning & Zoning Department identifies seven potential trail projects. Six of the projects are in the northeast portion of the county and would connect the communities of Logan, Bright, West Harrison and Greendale. The seventh project would extend the Dearborn Trail southward from Lesko Park in Aurora to the Dearborn-Ohio County line at Laughery Creek.



### Trail # 1

Bright Trail - +/- 1.4 miles

### Trail # 2

Bright Trail Extension  
+/- 0.8 miles

### Trail # 3

Bright Elementary School Trail  
+/- 2.2 miles

### Trail # 4

Logan / Bright Trail  
+/- 1.9 miles

### Trail # 5

Bright / Greendale Trail  
+/- 3.6 miles

### Trail # 6

Bright / Harrison Trail  
+/- 2.9 miles

### Trail # 7

Dearborn Trail – Rising Sun Ext.  
+/- 1.25 miles

---

**Other Community Initiatives-** In addition to the trail planning projects being accomplished by Dearborn County's Planning & Zoning staff and the three river cities, residents across the County are indicating multi-use trails and greenways are important and should be considered as a part of future community plans.

**Dillsboro-** Dillsboro currently has an approximately one-mile paved multi-use trail at its Recreation Park on Front Street. There are also paved walkways located on privately owned properties behind the Waters of Dillsboro – Ross Manor facility and the Western Pines housing development. While not currently in the public domain, these walking paths are enjoyed by residents who reside there. According to Dillsboro's Economic Development Director Susan Greco, consideration has been given to acquiring portions of these trails for public use. If this were accomplished, Dillsboro would then explore the concept to link the three walking trails with a segregated path or enhanced sidewalk system.

**Moore's Hill-** In 2015 Moore's Hill completed its most recent Comprehensive Plan entitled "Envision 2035". In addition to addressing transportation infrastructure, the plan also identifies strategies focusing on the development of an internal sidewalk system as well as a pathway system that connects with other communities. Specifically, the plan proposes the "Historic College Walk", a trail that would connect the Moore's Hill school campus to the former site of the Collegeville Railroad Depot along the CSX railroad. Additionally, the Comprehensive Plan proposes a regional greenway trail that would link Moore's Hill, Milan, Sparta, Aurora, and Versailles State Park via a multi-use trail.

**Hidden Valley Lake-** Currently, Hidden Valley Lake has approximately 2.5 miles of hiking trails located within its 70-acre recreation complex. While there are no segregated multi-use paths in Hidden Valley, residents are active and enjoy the community's existing outdoor recreation amenities including the lake, swimming pool, sports complex, and golf course. A volunteer group is currently pursuing the development of Lauren Hill Park to be located near Georgetown Road and Fairway Drive. This public park is to include a BMX track and dog park in its initial phase.



---

## **Surrounding Counties**

The following is an update of the four counties adjacent to Dearborn County.

### **Ohio County**

There are no plans to establish a multi-use trail or trail system in Ohio County at this time. Approximately 8-10 years ago, Rising Sun and Aurora officials worked with Indiana Department of Transportation (INDOT) to include a multi-use trail along the river side of State Route 56 as part of a proposed extensive improvement and realignment of SR 56. According to Rising Sun Planning & Zoning Project Manager Mike Northcutt, Rising Sun contributed funding toward the design of the bike trail project. Unfortunately, the project's scope was significantly reduced at the sole discretion of INDOT and no bike trail improvements were included in the final project.

### **Ripley County**

According to Executive Director of Area Planning & Zoning for Ripley County Tad Brisnon, there no current plans or initiatives to establish a multi-use trail or trail system in Ripley County.

### **Franklin County**

Franklin County is home to the Whitewater Canal Trail that follows the tow path of the historic Whitewater Canal in Metamora, Indiana. Managed by Whitewater Canal Trail, Inc., a 501c3 nonprofit corporation, this linear trail system includes six miles of trail within three individual segments. An additional two miles of trail is scheduled to be added to the western leg in 2020 that will link Metamora to the Laurel Feeder Dam along the Whitewater River. Future proposed segments include a six-mile leg that will connect the Yellow Bank Trail Head (east of Metamora) to Brookville. Future trail considerations include the conversion of the existing I&O railroad that connects Brookville to West Harrison. This section of railroad is currently in disrepair and inactive. Should the I & O railroad ever formally abandon this section, it would be a prime candidate for conversion to a multi-use trail.

### **Hamilton County, Ohio**

Great Parks of Hamilton County currently manages an 8-mile bike trail loop at Miami Whitewater Forest near Harrison. In accordance with the Tri-State Trails' 2014 Regional Trails Plan, Great Parks' long-range vision is to develop a greenway and trail system connecting Miami Whitewater Forest and Shawnee Lookout near Greendale, Indiana. The 2014 Regional Trails Plan also proposes connecting Shawnee Lookout to

downtown Cincinnati via the Ohio River Trail along US 50. While there are no immediate plans to construct this trail system in western Hamilton County, it remains an element of the Regional Trails Plan and Great Parks' Comprehensive Master Plan.

## Summary of Findings

The river cities of Lawrenceburg, Greendale and Aurora have been leaders in trail development in Dearborn County. The Dearborn Trail currently includes approximately 5.6 miles of trail network connecting these three communities. As discussed earlier, there only remains three *Key Gaps* to be solved. When these gaps are closed, Dearborn County will boast seven miles of continuous trail connecting its river cities along the Ohio River.

The Communities of Dillsboro and Moores Hill have both demonstrated interest and support for exploring more trails and trail connections. The communities of Bright, Logan and West Harrison are included in Dearborn County's Community Trail Plan.

**One Dearborn Inc.'s** 2018 Regional Economic Development Action Plan identified several priorities for trail connectivity as shown below.

TRAIL CONNECTIVITY PRIORITIES					
Project Name	Community	Project Description and Intent/Goals	Tier 1 Top County-Wide Priority Project	Tier 2 County-Wide Priority Project	Tier 3 Local Priority Project
Dearborn Trail Extension	Aurora	Trail Extension along SR 56 from Lesko Park to Laughery Creek. Project allows for future extension of trail into Ohio County toward Rising Sun.			
Riverfront Development - Riverfront Trail Extension	Aurora	Segment of Dearborn Trail between Lesko Park and the George Street Bridge. This section would involve a sheet piling retaining wall along the Ohio River.			
Dearborn Trail Improvements	Lawrenceburg	Construct incomplete segment of Dearborn Trail between casino and Greendale.			
Bright Trails	Dearborn County	Complete segments 1 through 6 per the 2040 County Trails Plan.			
New Trail Projects	Lawrenceburg, Aurora, Greendale, Dillsboro, Moores Hill, Hidden Valley Lake	Implement trails master plans developed for each community.			
Dearborn Trail Improvements - George Street to Manchester Landing	Aurora	Upgrade of existing trail to improve barrier between trail and adjacent industry.			

Note: The Dearborn Trail Improvements in Aurora (Tier 3) – George Street to Manchester Landing are now complete.

---

**The Ohio-Kentucky-Indiana Regional Council of Governments (OKI)** recently approved its OKI 2050 Metropolitan Transportation Plan. Four Dearborn County Trail projects are included in the approved list as follows:

- **Lawrenceburg** – Dearborn Trail connection between Greendale Trail and Riverfront Trail adjacent to casino.
- **Greendale** - Trail connecting Broadway Street in Greendale to Lawrenceburg School Campus.
- **Greendale** - Trail connecting Greendale to Ohio State line via Oberting Road.
- **Aurora** - Dearborn Trail extension from Lesko Park to Laughery Creek.

### **Recommended Next Steps**

1. Complete trail development projects that are in the current “pipeline” for design and construction as follows:

Lawrenceburg-

Riverfront Trail Connector – Priority 1  
Levee Access trail – Priority 2

Greendale-

Trail 01 – Trail connection form Ridge Ave. to LCD Fields and Greendale Soccer Fields – Priority 1

Trail 02 – Trail connection from Ridge Ave. to Lawrenceburg School Campus – Priority 2

Trail 04 – Ridge Ave. Trail from Levee to Broadways St. – Priority 2

2. Develop a Comprehensive Trails Master Plan for Dearborn County. This plan would address the following:
  - I. Place focus and priority on closing the three *Key Gaps* in the Dearborn Trail (Lawrenceburg, Greendale, and Aurora)
    - a. Identify needed right-of-way or land acquisition to complete the gaps
    - b. Update estimated design & construction costs
  - II. Refine the Bright Trails studies
    - a. Identify needed right-of-way or land acquisition to complete the six segments
    - b. Update estimated design and construction costs
  - III. Refine the Dearborn Trail Extension from Aurora’s Lesko Park to Laughery Creek
    - a. Identify needed right-of-way or land acquisition to complete the gaps

- 
- b. Update estimated design & construction costs
  - IV. Identify potential outside funding sources for local projects
  - V. Implement trails master plans for the following communities: Lawrenceburg, Greendale, Aurora, Dillsboro, Moores Hill and Hidden Valley Lake
  - VI. Identify potential trail corridors to connect the river cities to Dillsboro, Moores Hill, Hidden Valley Lake & Bright

To accomplish this Comprehensive Trails Master Plan, it will be advantageous to reinstitute One Dearborn Inc.'s Trail Connectivity Task Force.

- 3. Explore creating a regional trail district or entity that is solely focused on completing the Dearborn Trail and ensuring it remains a sustainable asset for the long term. This proposed entity would provide consistent vision and oversight to the entire length of the trail from the Ohio State line to Laughery Creek.

Why should a trail district be considered?

- Long term viability of the Dearborn Trail may be at risk as the trail ages. Currently, trail maintenance costs are embedded in the annual operating costs of the three river cities (Lawrenceburg, Greendale, and Aurora). Should one or more of these cities experience a significant loss of revenue and therefore need to reduce operating costs, trail maintenance and integrity may be reduced.
- A trail district or single entity would bring even more focus and attention to the Dearborn Trail as one of the most significant assets in the Dearborn County region.

Ideally this trail district or entity would:

- Have legal authority to negotiate and acquire right-of-way and land necessary for a linear trail system
- Coordinate with the local jurisdictions to complete trail design, construction and major maintenance and repair needs
- Coordinate with local jurisdictions to provide consistent branding of the Dearborn Trail in terms of signage, site amenities and user support facilities
- Coordinate with local jurisdictions to provide certain maintenance functions along the trail
- Coordinate with local jurisdictions to seek outside funding to complete and / or enhance the Dearborn Trail
- Have sustainable funding sources derived through inter-governmental agreements, and/or other public and non-public sources

---

## **Acknowledgements**

### **Prepared for:**

One Dearborn, Inc

#### Contact Information

Terri Randall, President and CEO

Mike Perleberg, Director of Marketing and Community Projects

500 Industrial Drive, Suite 2110

Lawrenceburg, IN 47025

One Dearborn, Inc. would like to thank all those who participated in in the meetings and interviews and contributed to the preparation of this report.

#### Dearborn County

Jim Thatcher, County Commissioner

Mark McCormack, Director of Planning & Zoning

#### Lawrenceburg

Mike Clark, Director of Engineering

Guinevere Emery, Communications Director

Bryan Messmore, City Coordinator, Redevelopment Director

#### Greendale

Al Abdon, Executive Director, Redevelopment Commission

Mike McLaughlin, President, Redevelopment Commission

#### Aurora

Mark Drury, Mayor

Derek Walker, City Manager

#### Dillsboro

Susan Greco, Economic Development Director

#### Moore Hill

Josh Holland, Redevelopment Commission

#### Hidden Valley Lake

Bruce Keller, Community Manager

Dave Wissman, Assistant Community Manager

#### West Harrison

Nicole Daily, Zoning Administrator for Dearborn County

#### Franklin County, Indiana

Terry Duffy, Whitewater Canal Trail

---

**Acknowledgements continued**

Ohio County / Rising Sun, Indiana

Mike Northcutt, Project Manager, Planning & Zoning Department

Ripley County, Indiana

Tad Brinson, Executive Director Area Planning & Zoning

Hamilton County, Ohio

Tim Zelek, Chief of Planning, Great Parks of Hamilton County

Tri-State Trails

Wade Johnston, Executive Director

Ohio-Kentucky-Indiana Regional Council of Governments (OKI)

Andy Reser, Transportation Improvement (TIP) Program Manager

***Prepared by:***

Jack Sutton, Consultant

PO Box 236

Aurora, IN 47001

513-678-7530

[Jsutton677@gmail.com](mailto:Jsutton677@gmail.com)

---

## **Appendix A**

### **Potential Funding Sources**

The following is a list of potential funding sources available to communities in Dearborn County.

#### **Federal Sources:** Managed through OKI Regional Council of Governments

- STBG = Surface Transportation Block Grant (Formerly STP)
- CMAQ = Congestion Mitigation and Air Quality (Lawrenceburg Township only)
- TA = Transportation Alternatives

Note: Due to Dearborn County's relative population size, federal funding allocated for Bicycle and Pedestrian projects through OKI is limited. For detailed information, go to: -<https://funding.oki.org/wp-content/uploads/2020/02/OKI-Indiana-STBG-HSIP-CMAQ-TA-Application-Packet.pdf>

#### **Other Federal Funds:**

- *Better Utilizing Investments* to Leverage Development (BUILD formerly TIGER)
- Recreational Trail Program (RTP – Federal Funds managed by IDNR)
- Land and Water Conservation Fund (LWCF – Federal Funds managed by IDNR)

#### **State Sources:** Managed through Indiana DNR Division of Outdoor Recreation

- Next Level Trails Funds (Currently on hold due to COVID-19)
  - Began in 2016 - \$90M total over three rounds
  - \$5M cap for regional Projects
  - \$2M cap for local projects
  - Requires a 20% minimum local match
    - Local match can include land value, in kind donation of labor & material
  - <https://www.in.gov/dnr/outdoor/9855.htm>

#### **Other State Sources**

- Land Acquisition Only
  - Bicentennial Nature Trust-
    - <https://www.in.gov/dnr/heritage/7309.htm>
- Indiana Office of Tourism Development's "Destination Development" grant
  - <https://www.visitindianatourism.com/node/412>
- Indiana Housing and Community Development's Authority's CreatINg Places grant
  - <https://www.in.gov/ihcda/4141.htm>
- Office of Community and Rural Affairs' Quick Impact Place-Based grant
  - <https://www.in.gov/ocra/quipgrant.htm>

---

## **Appendix A continued**

- Indiana State Department of Health's Bicycling and Pedestrian Planning Grants
  - For local Bike/Ped plans
  - <https://www.in.gov/isdh/files/2019-2020%20ISDH%20Bicycle%20and%20Pedestrian%20Plan%20Funding%20Application.pdf>
- Indiana Economic Development Corporation's Regional Cities Initiative
  - Awarded North-central, northeast and southwest Indiana \$42M each to assist with regional development plans in late 2015- Trail development was a component of all successful applicants
  - <https://www.iedc.in.gov/programs/regional-cities-initiative/home>

## **Non-Public Sources**

- Dearborn Community Foundation
- Ohio County Community Foundation
- Private Foundations related to:
  - Health & Wellness Care
  - Travel & Tourism
  - Business & Financial Services
  - Main Street Associations