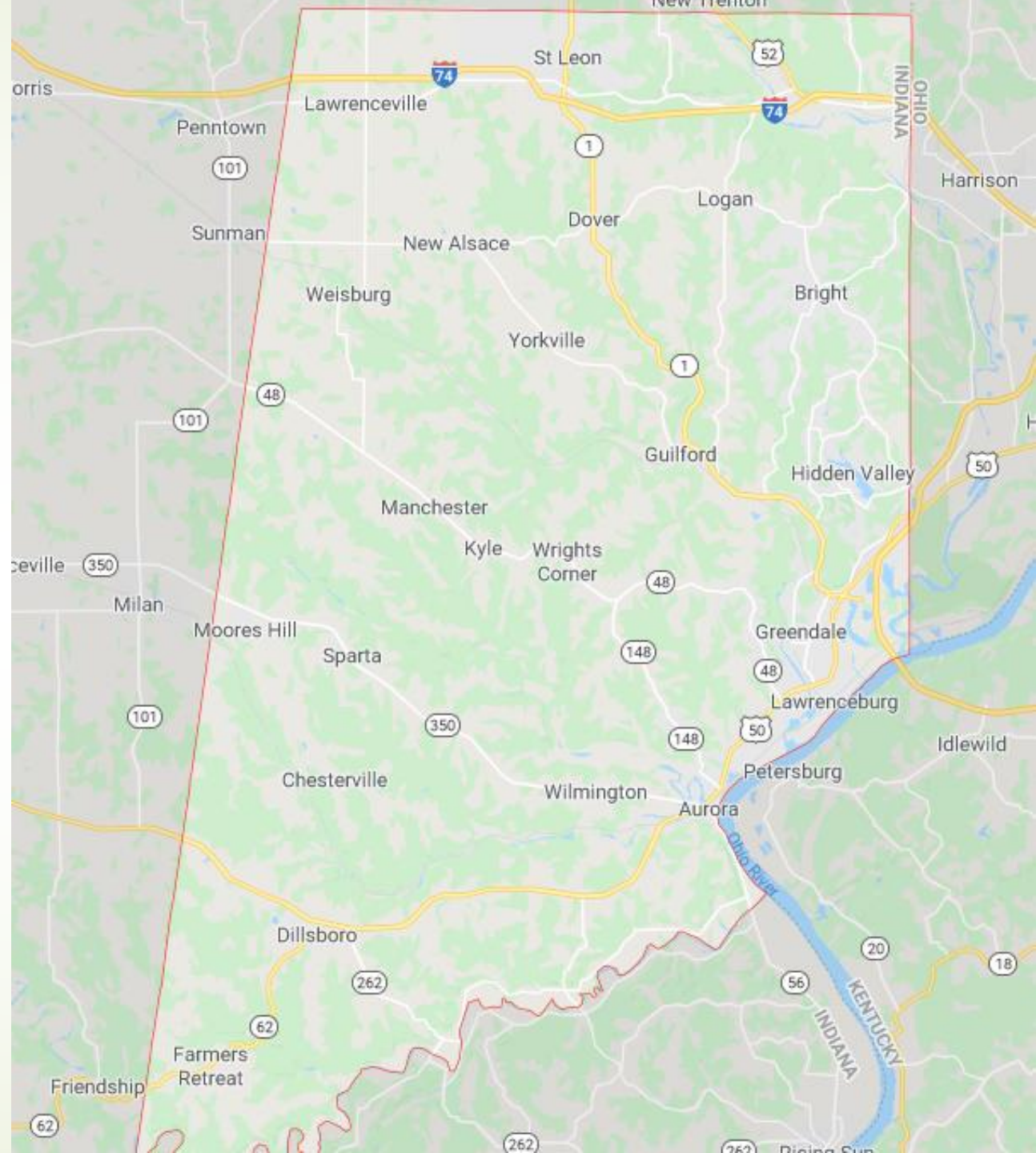


Dearborn County Trails Report

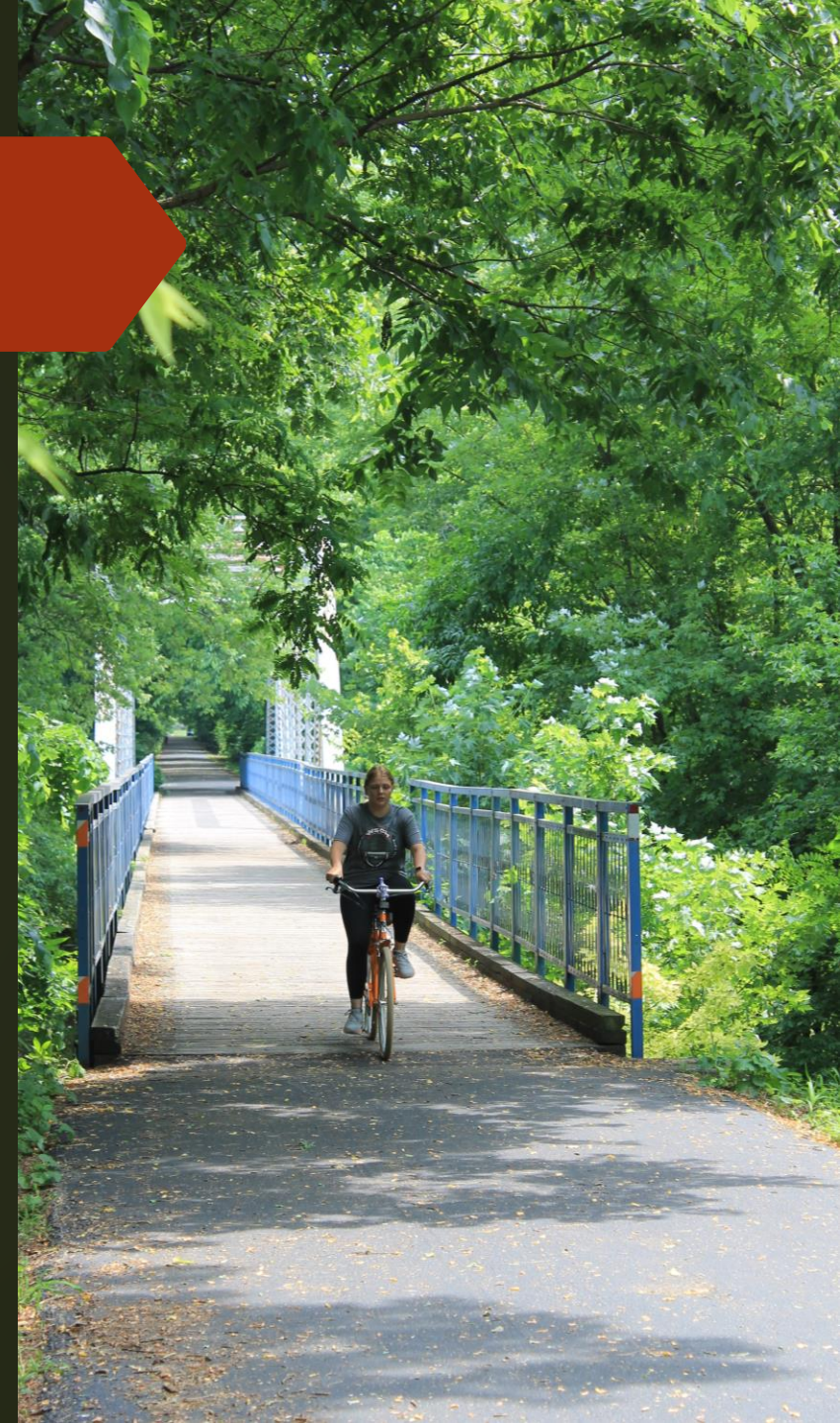
August 20, 2020



Why are trails important?

► Multi-use trails:

- Are the link to relaxation and exercise in the great outdoors for millions of Americans
- Provide affordable recreation and transportation opportunities
- Preserve open space
- Provide venues for health and wellness activities
- Contribute to the economic vitality of cities and towns





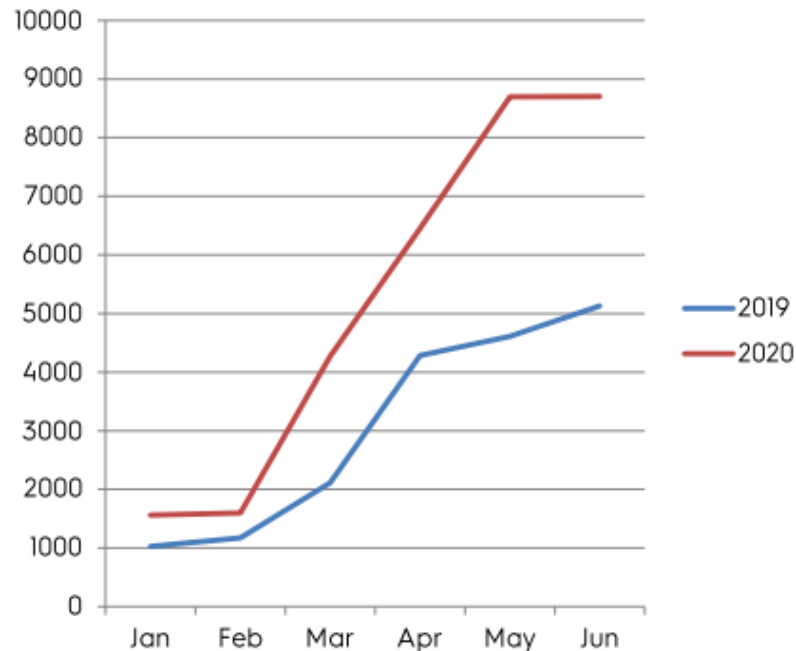
Most Popular Outdoor Activities

1. Running, jogging, trail running
2. Fishing
3. Cycling

Close-to-home recreation: Participants tended to travel between one and ten miles from their home and their destinations for outdoor activities

Trail use during a pandemic...

Dearborn Trail Lawrenceburg, Indiana



	2019	2020	% CHANGE
Jan	1029	1562	52%
Feb	1175	1598	36%
Mar	2111	4268	102%
Apr	4283	6454	51%
May	4613	8696	89%
Jun	5131	8703	70%
TOTAL	18342	31281	71%

Trail counts by Tri State Trails



The Process

- ▶ 19 Meetings & Interviews via Phone, Zoom & In Person
- ▶ 23 Individuals Participated
 - ▶ Representing 14 communities and organizations
- ▶ 68+ Trail Related Documents Reviewed (plans, reports, maps & concepts)

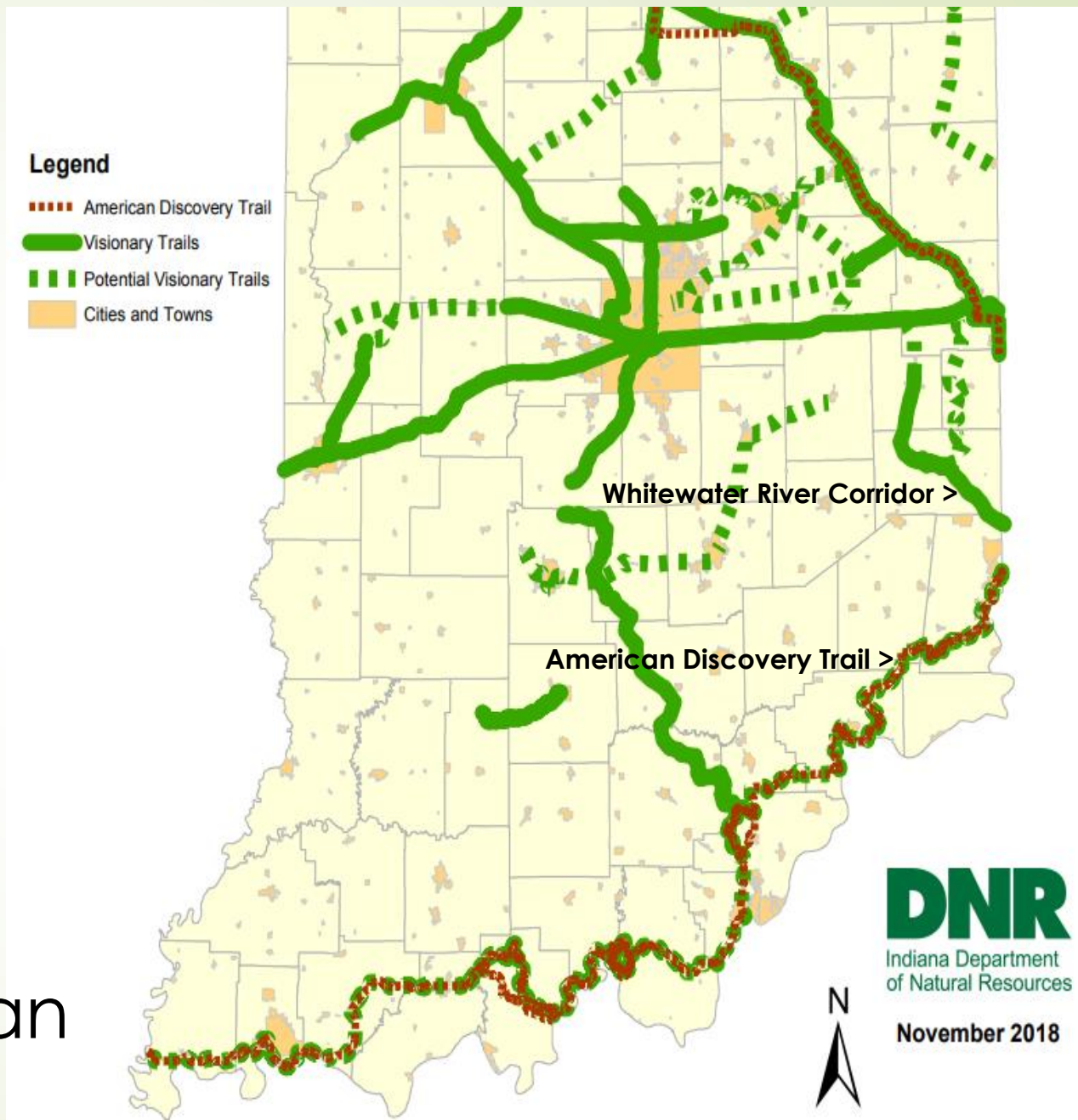


Findings

- ▶ Existing Trails
 - ▶ Paved Multi-Use Trails – +/- 8 miles
 - ▶ Dearborn Trail - +/- 5.6 miles
 - ▶ Loop Trails – Greendale, Aurora & Dillsboro
 - ▶ Hiking Trails
 - ▶ +/- 2.5 miles (HVL)
 - ▶ Dearborn County Park Board – 3 Parks with trails
- ▶ Trail Projects Currently Under Consideration
- ▶ Previous Trail Studies
- ▶ Regional Connectivity
- ▶ The “Key Gaps”

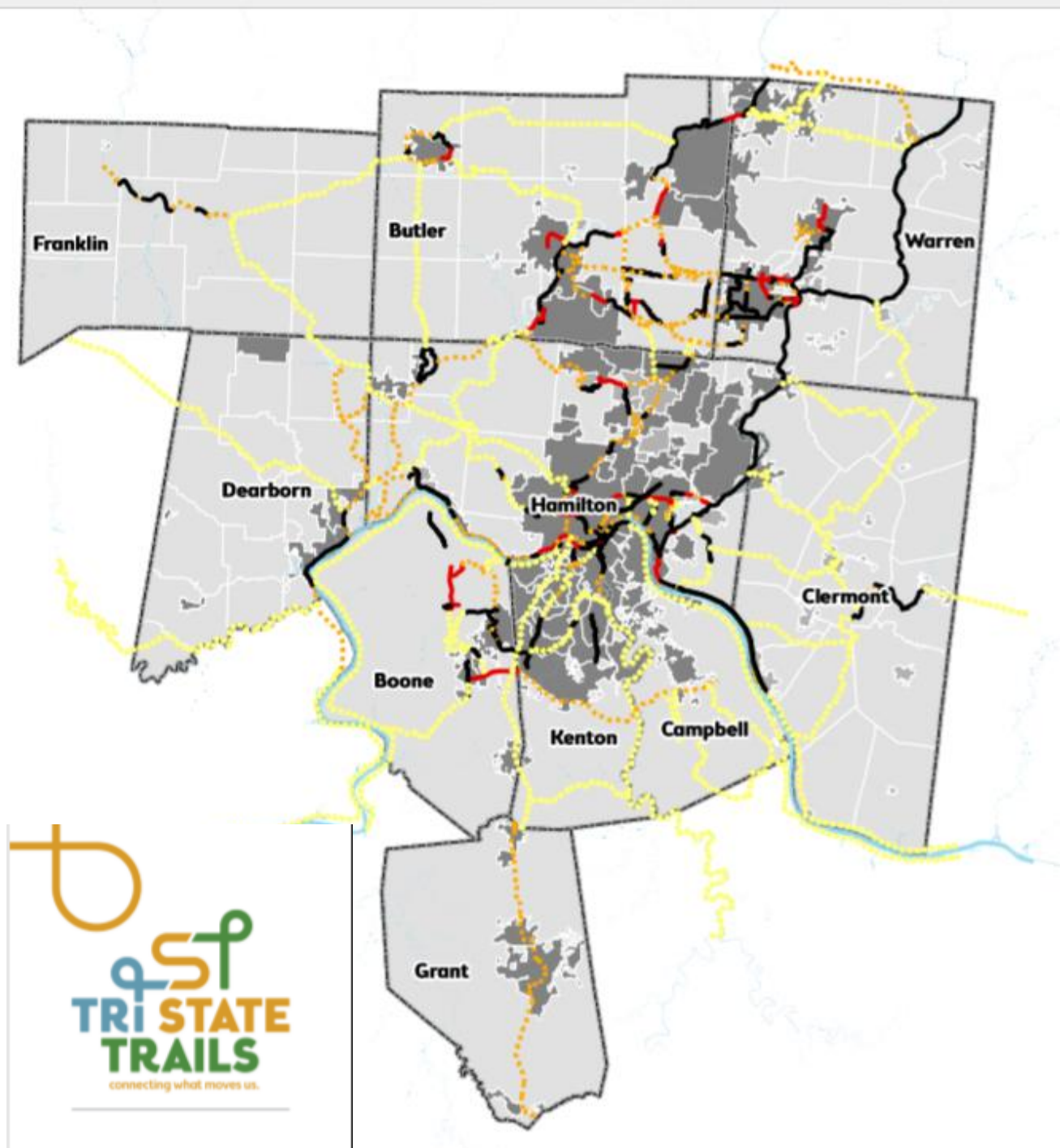


2016 Indiana State Trails Plan



Tri State Trails

2014 Regional Trails Plan



Ohio River Recreation Trail



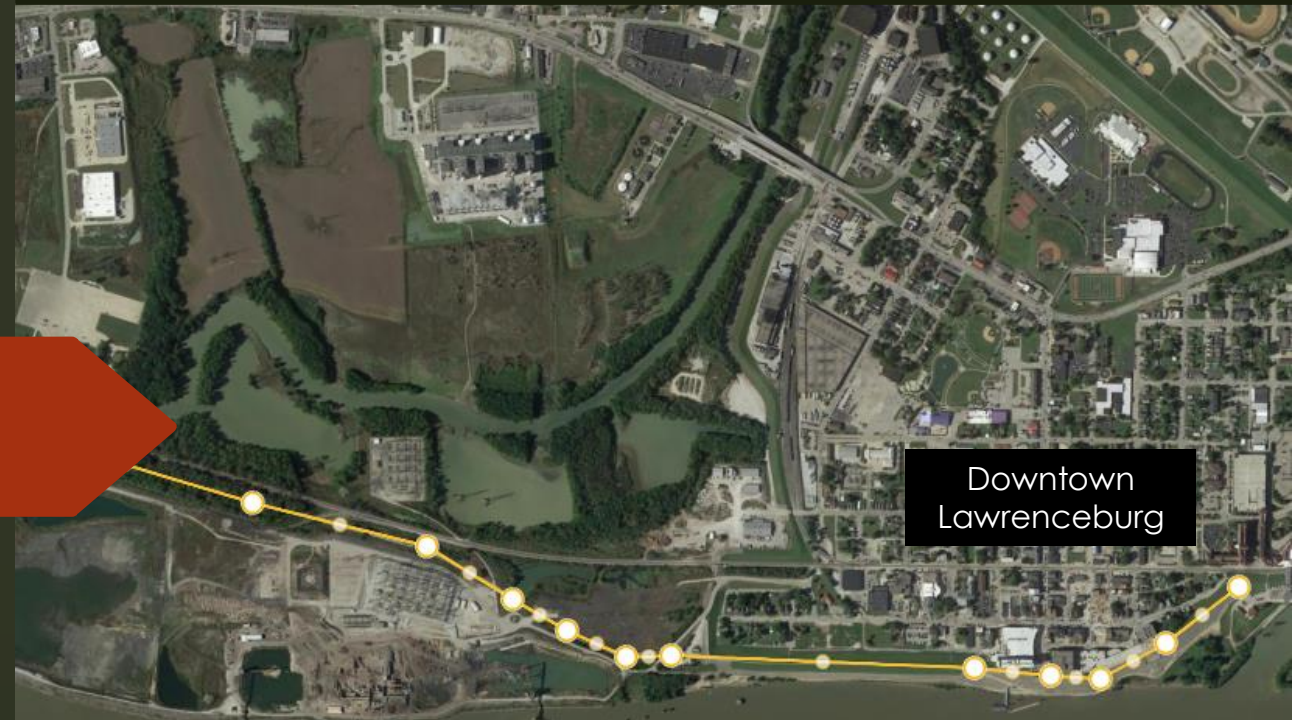
Lawrenceburg Trail Considerations January 2016



Lawrenceburg *Existing Trails*

Riverfront Trail

Aurora Corp Line to Casino
+/- 2.5 miles



Lawrenceburg

Currently Under Consideration
Priority 1

Riverfront Trail Connector

Link Greendale Trail to end of Levee at
Casino

+/- 0.6 miles



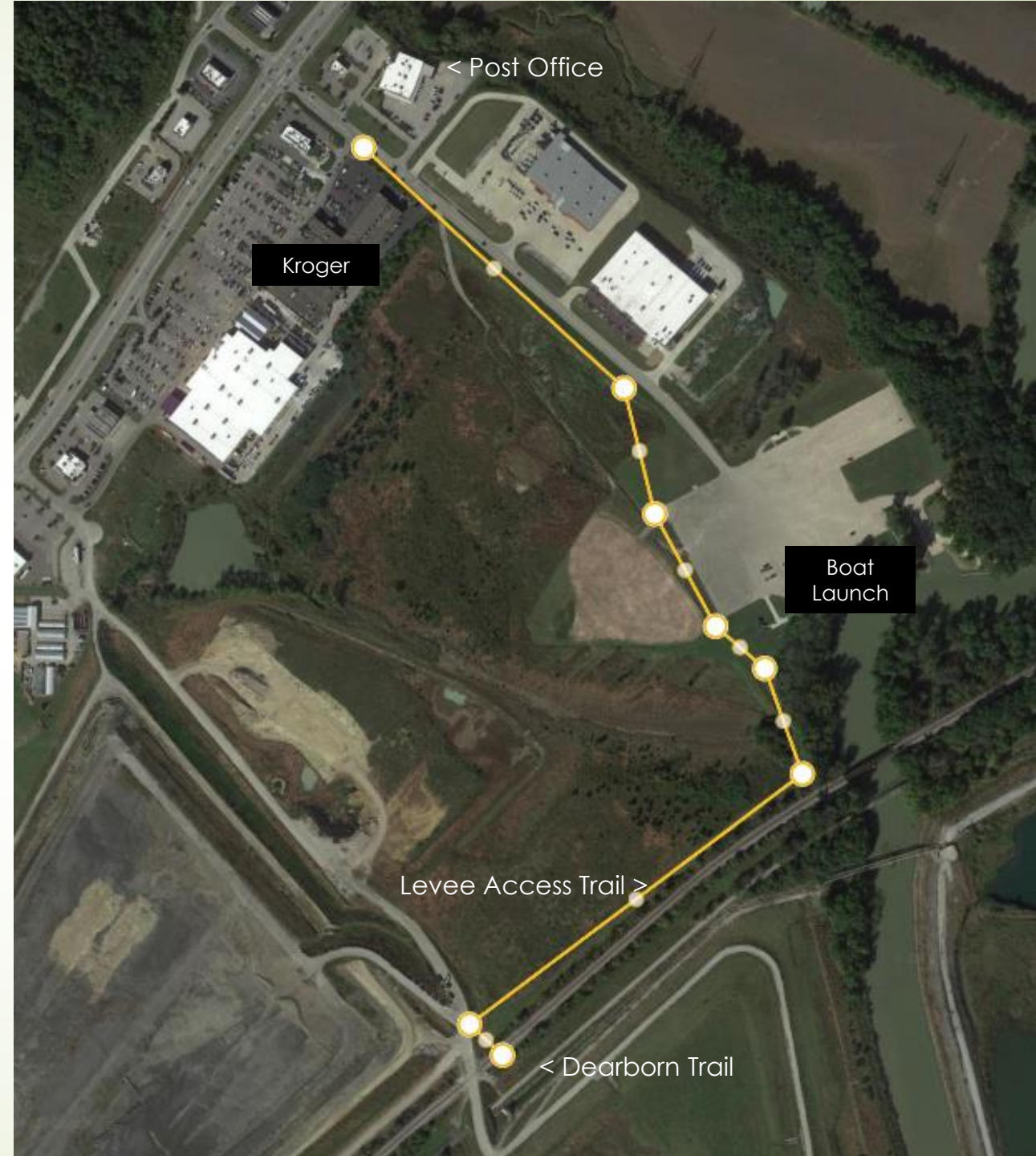
Lawrenceburg

Currently Under Consideration
Priority 2

Levee Access Trail

Link Riverfront Trail to Boat Launch
& US 50 Business Center (Kroger &
Post Office)

+/- 0.9 miles



Lawrenceburg

Previously Studied

Not Currently Considered Economically Feasible

Ludlow Hill Park Trail

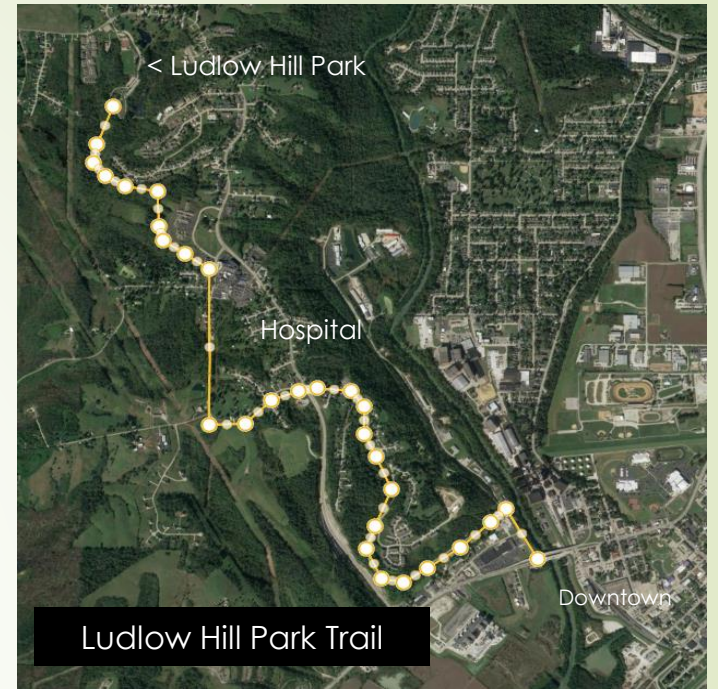
Link Us 50 Trail at Tanners Creek to
Ludlow Hill Park

+/- 3 miles

US 50 Trail

Link US 50 Business Center (Kroger &
Post Office) to Downtown Riverfront
Trail via Proximo Levee

+/- 2 miles



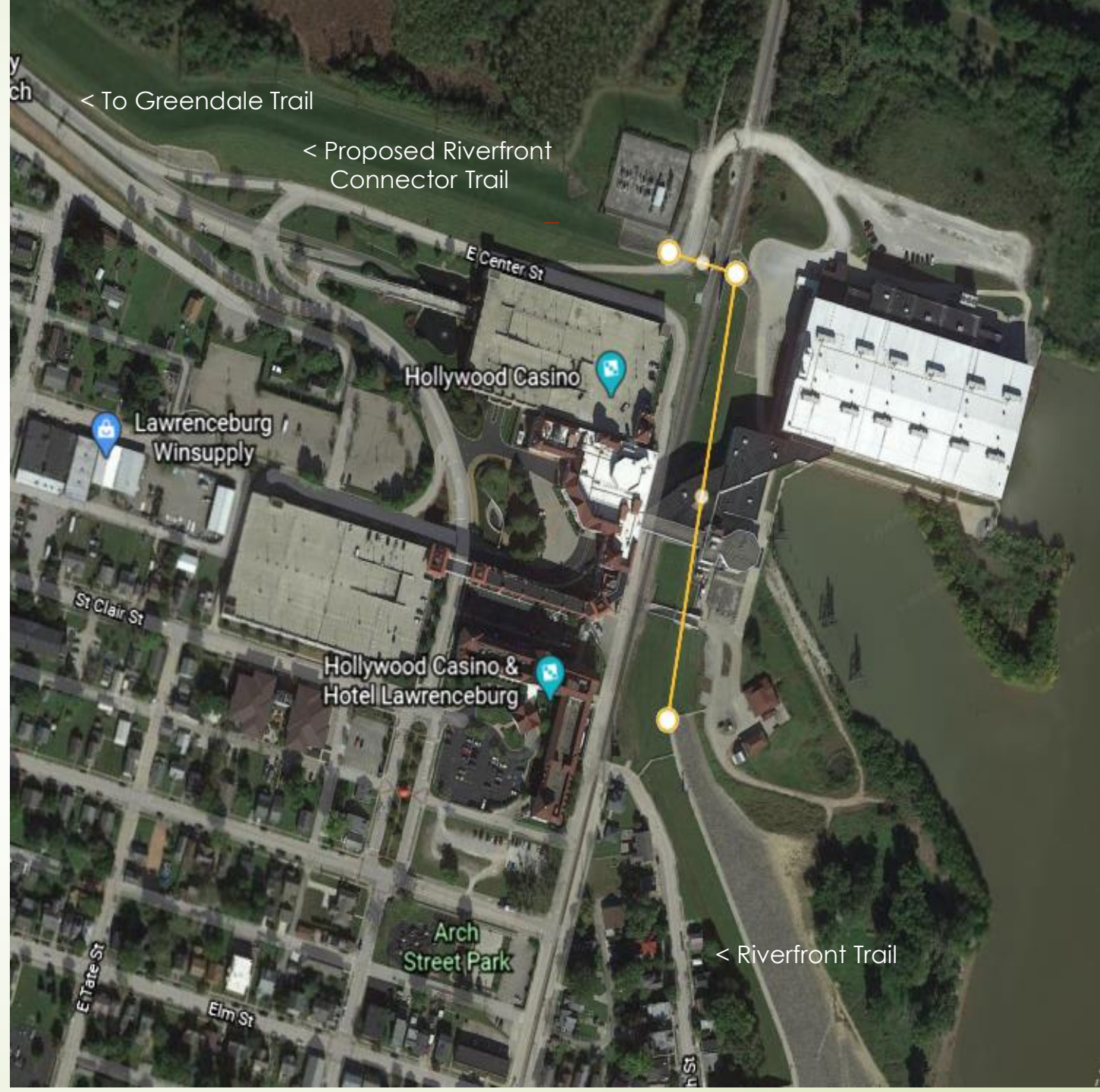
Lawrenceburg “Key Gap”

Linking the Levees

Casino & CSX Railroad

Link Greendale Trail to Riverfront Trail

+/- 0.2 miles



Greendale Trail Considerations March 2016



Greendale *Existing Trails*

Greendale Levee Trail
+/- 1.2 miles

Schnebelt's Park Trail
+/- 0.4 miles

Greendale Park Trail
+/- 0.25 miles



Greendale

Currently Planned & Budgeted
Priority 1

Trail 01

Greendale Connection to
Lawrenceburg
Phase 1- Ridge avenue to LCD Fields
and Greendale Soccer Fields
+/- 1 mile

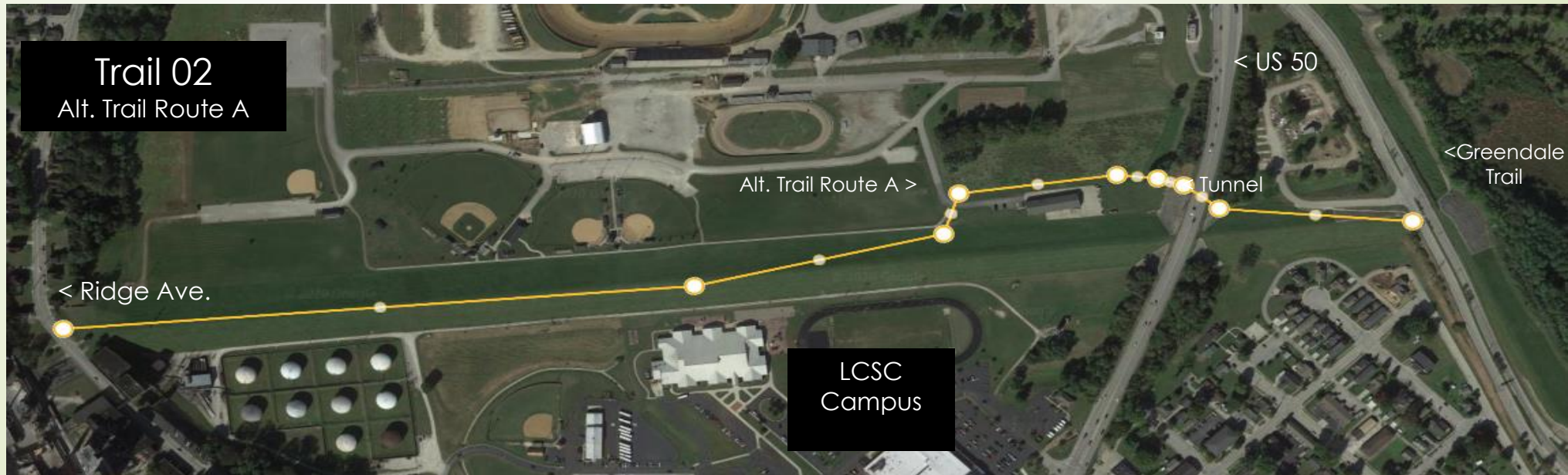


Greendale

Previously Studied –

Trail 02 – Context Design Study
LCD Levee Connection to Greendale Trail

Alternative Trail Route A – Tunnel Under US 50
Not Currently Considered Economically Feasible



Greendale

Previously Studied –

Trail 02 – Context Design Study
LCD Levee Connection to Greendale Trail

Alternative Trail Route B – Bridge Over US 50
Not Currently Considered Economically Feasible



Greendale

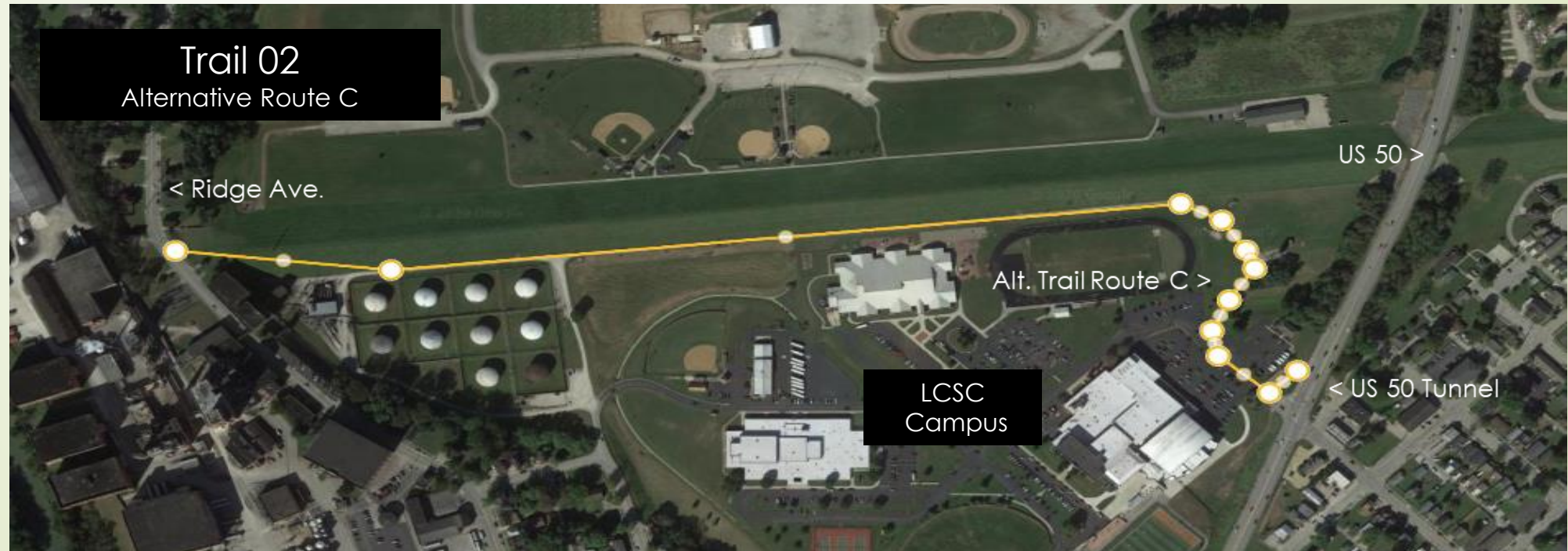
Currently Under Consideration

Trail 02-

Alternative Trail Route C

Ridge Avenue to US 50 Tunnel (Via LCSC Campus Cinder Road)

+/- 0.7 miles



Greendale Previously Studied

Trail 03- I-275 US 50 Crossing

Connect Greendale Trail to Oberting Road
+/- 1.3 miles



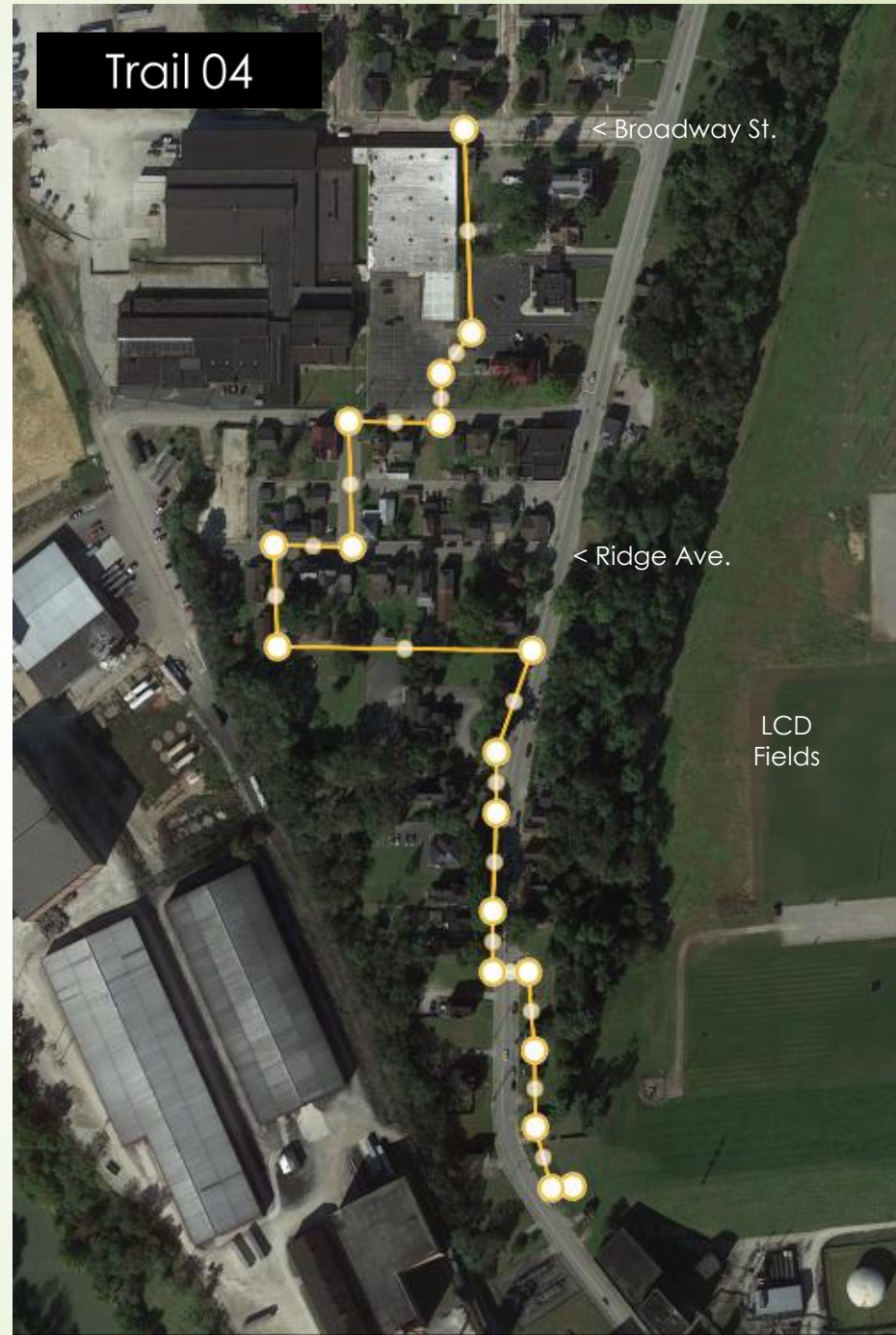
Greendale

Currently Under Consideration

May Be Combined with Trail 02 – Alternative Route C

Trail 04-

Ridge Avenue Trail
+/- 0.3 miles



Greendale

Previously Studied

Trail 05-
Oberting Road
+/- 2.1 miles



Greendale

Previously Studied

Trail 06-

US 50 Connection to Ohio State Line
+/- 1.8 miles

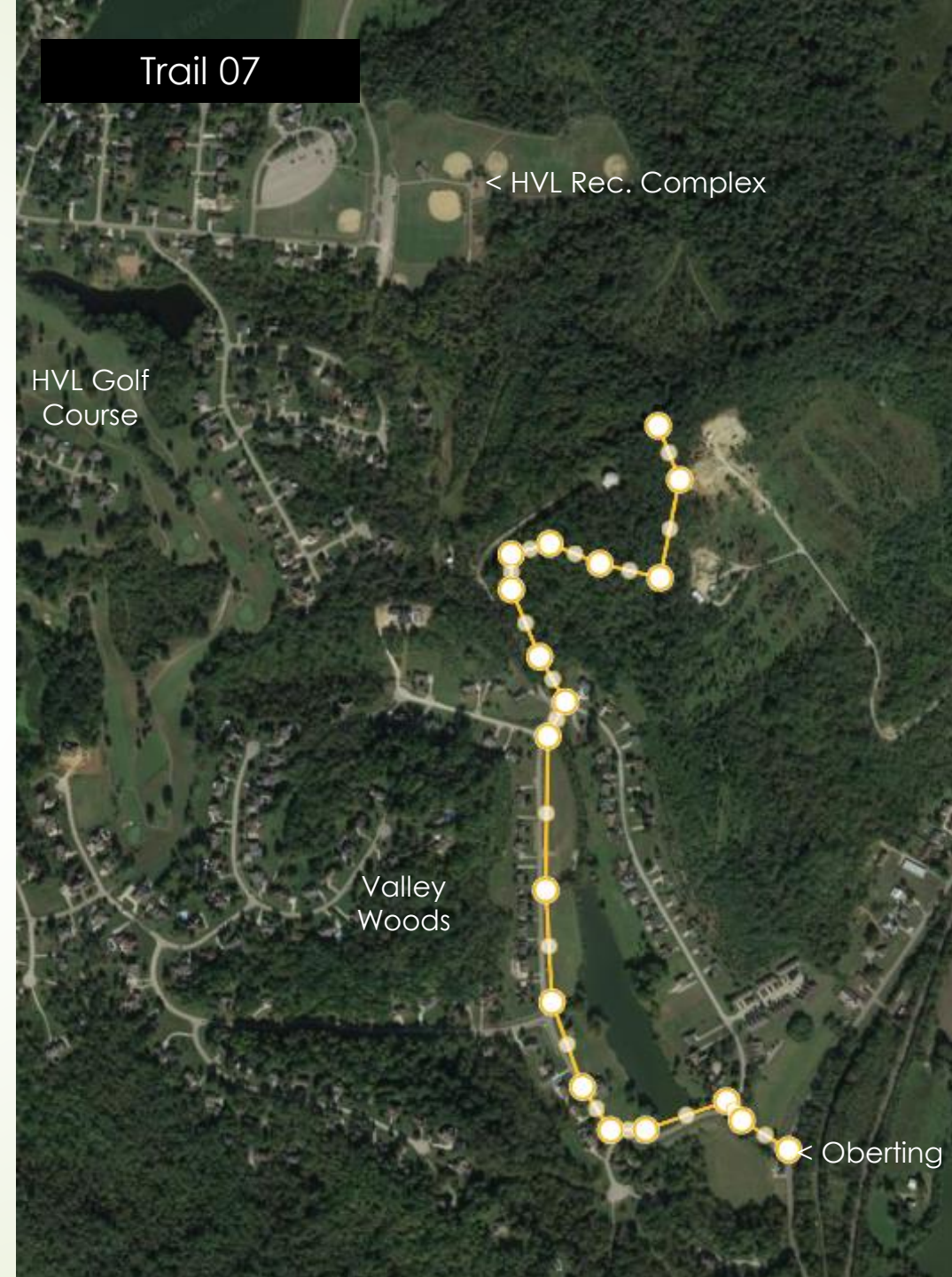


Greendale

Previously Studied

Trail 07-

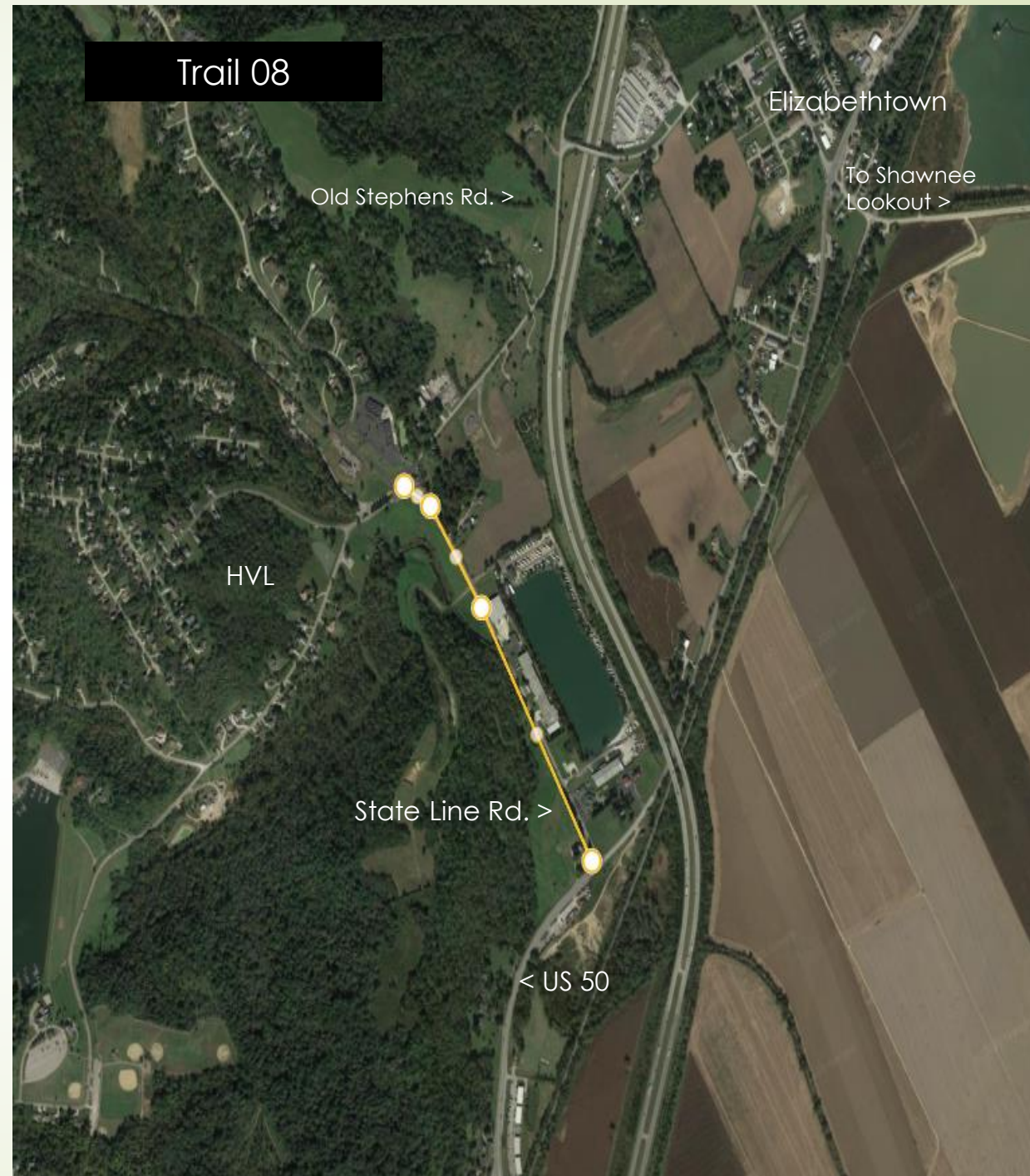
Connection to Hidden Valley Lake
From Oberting Road
+/- 1.3 miles



Greendale

Previously Studied

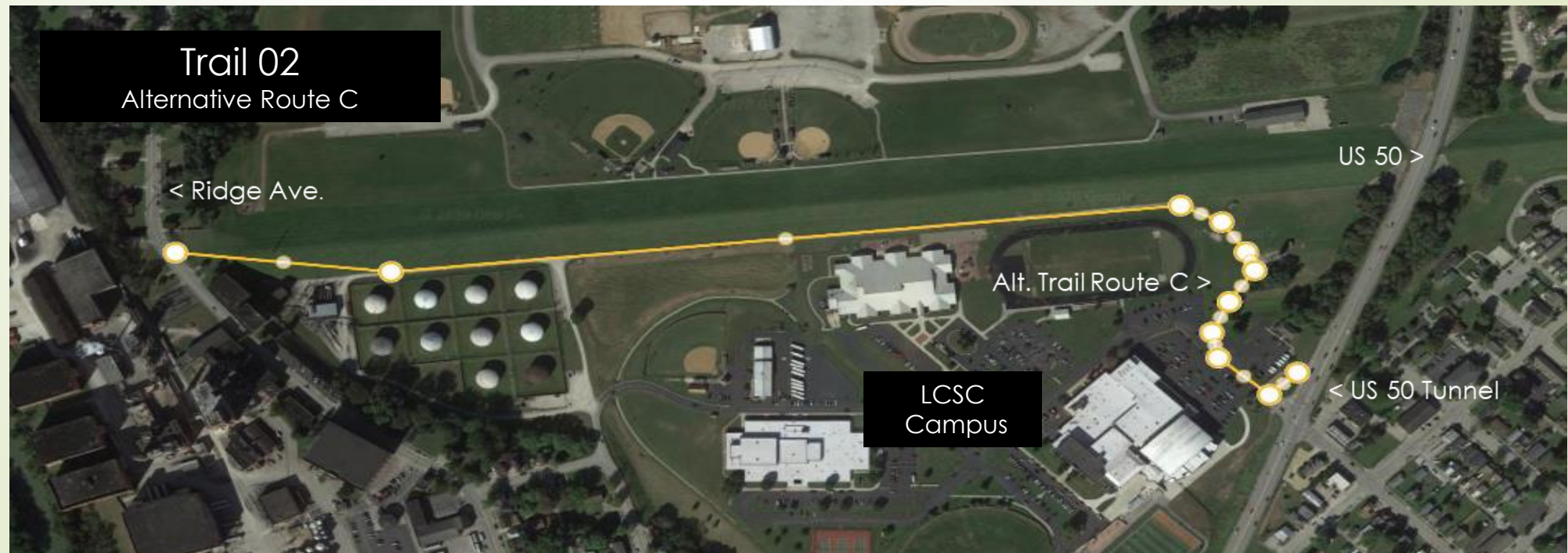
Trail 08-
State Line Road Trail
Connect US 50 to HVL Entrance at
Old Stephens Road
±/- 0.6 miles



Greendale

“Key Gap”

Linking Ridge Avenue to US 50 Tunnel (Via LCSC Campus Cinder Road)
+/- 0.7 miles



Aurora Trail Considerations June 2015



Aurora

Existing Trails

Dearborn Trail (North Segment)

+/- 1.4 miles

Dearborn Trail (Lesko Park)

+/- 0.8 miles

ARCC Field Loop Trail

+/- 0.3 miles



Aurora

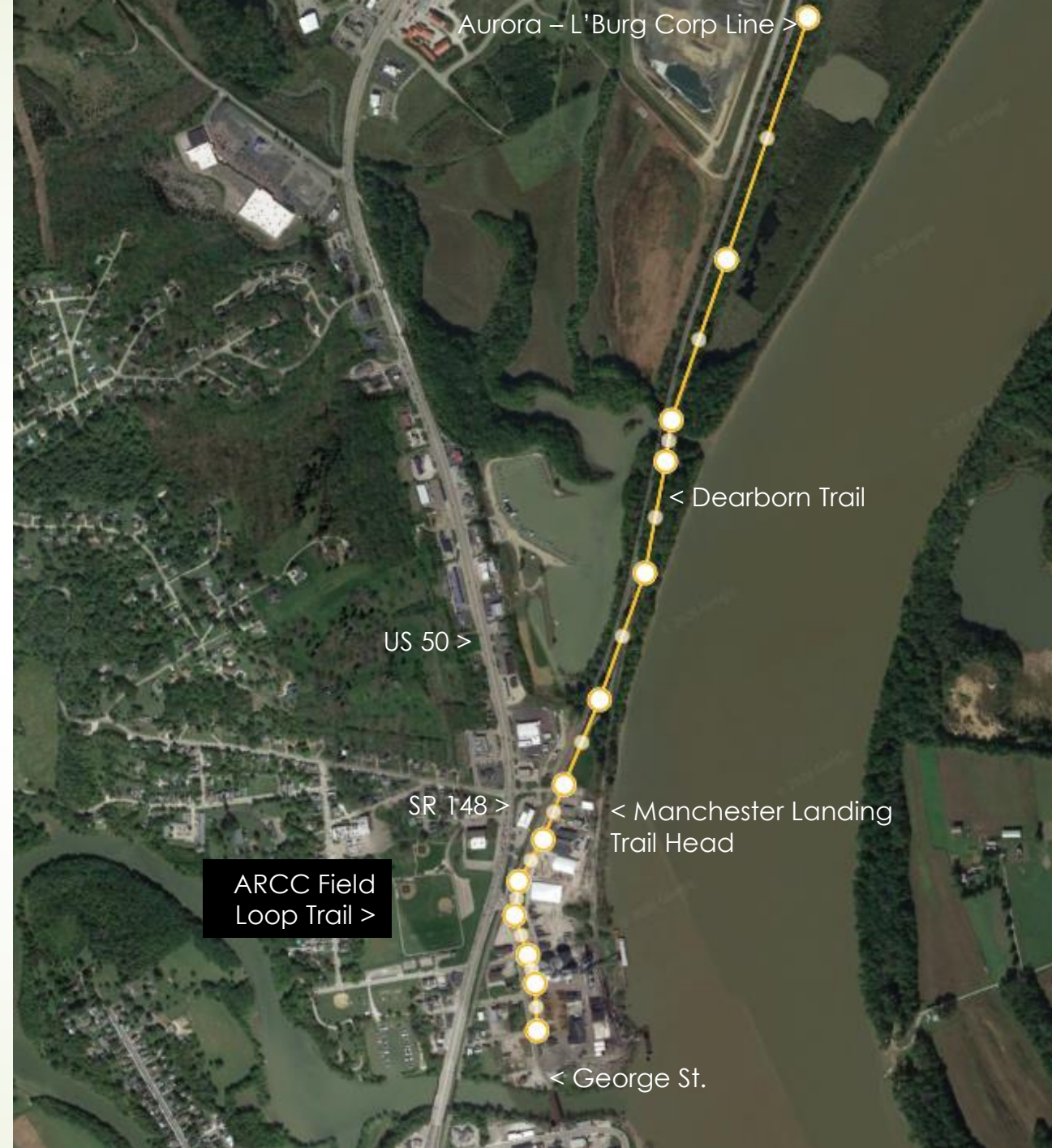
Existing

Dearborn Trail

George Street to
Lawrenceburg Corp Line
+/- 1.4 miles

ARCC Field

Loop Trail
+/- 0.3 miles





Aurora Existing

Lesko Park Trail +/- 0.8 miles



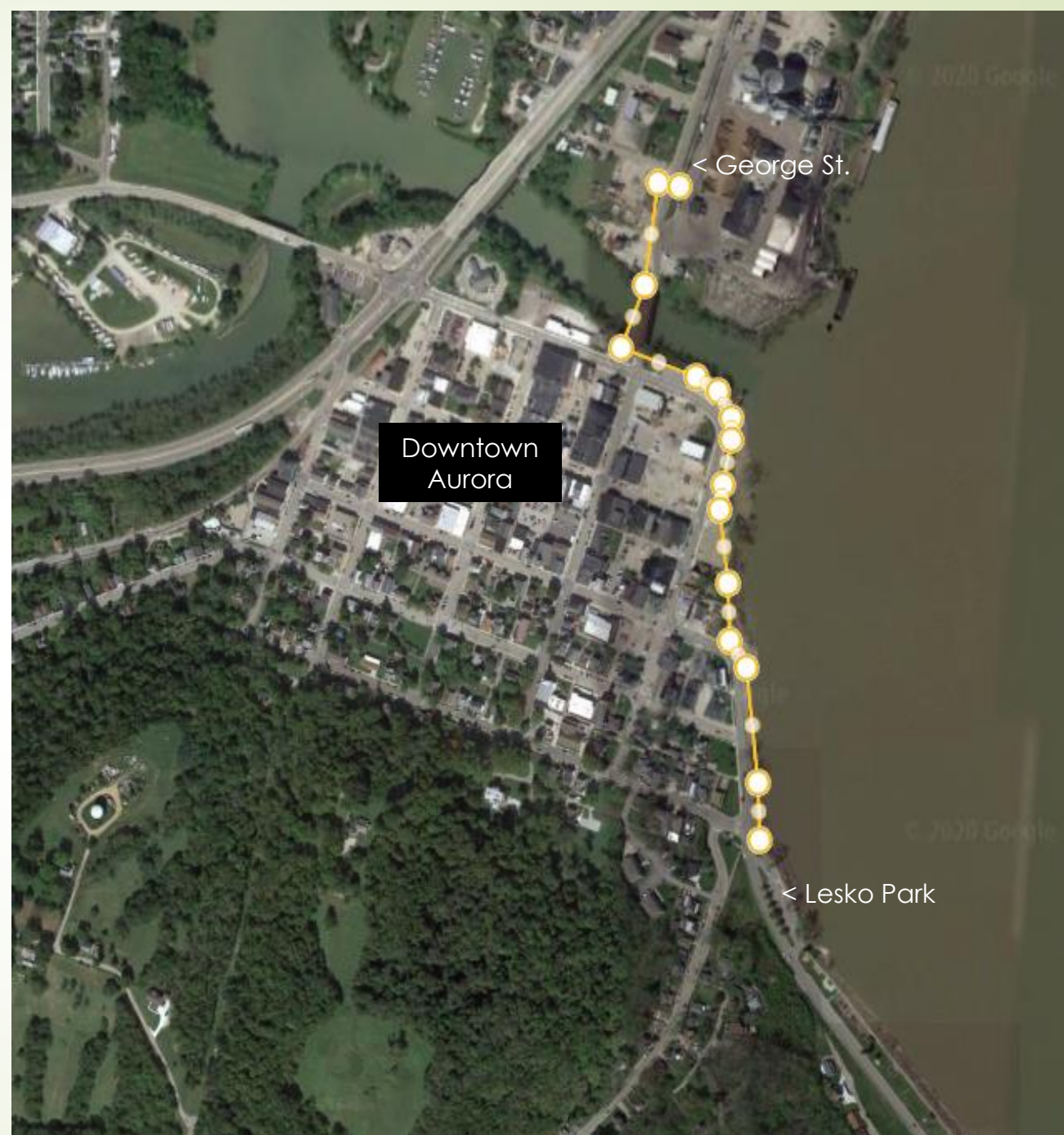
Aurora

Previously Studied

Downtown Connector

Trail Alternative 1

George St. to Lesko Park
As Per Aurora Riverfront Vision Plan
+/- 0.5 miles



Aurora

Previously Considered

Downtown Connector

Trail Alternative 2

George St. to Lesko Park
Via Main St. to 4th St. to SR 56
+/- 0.5 miles

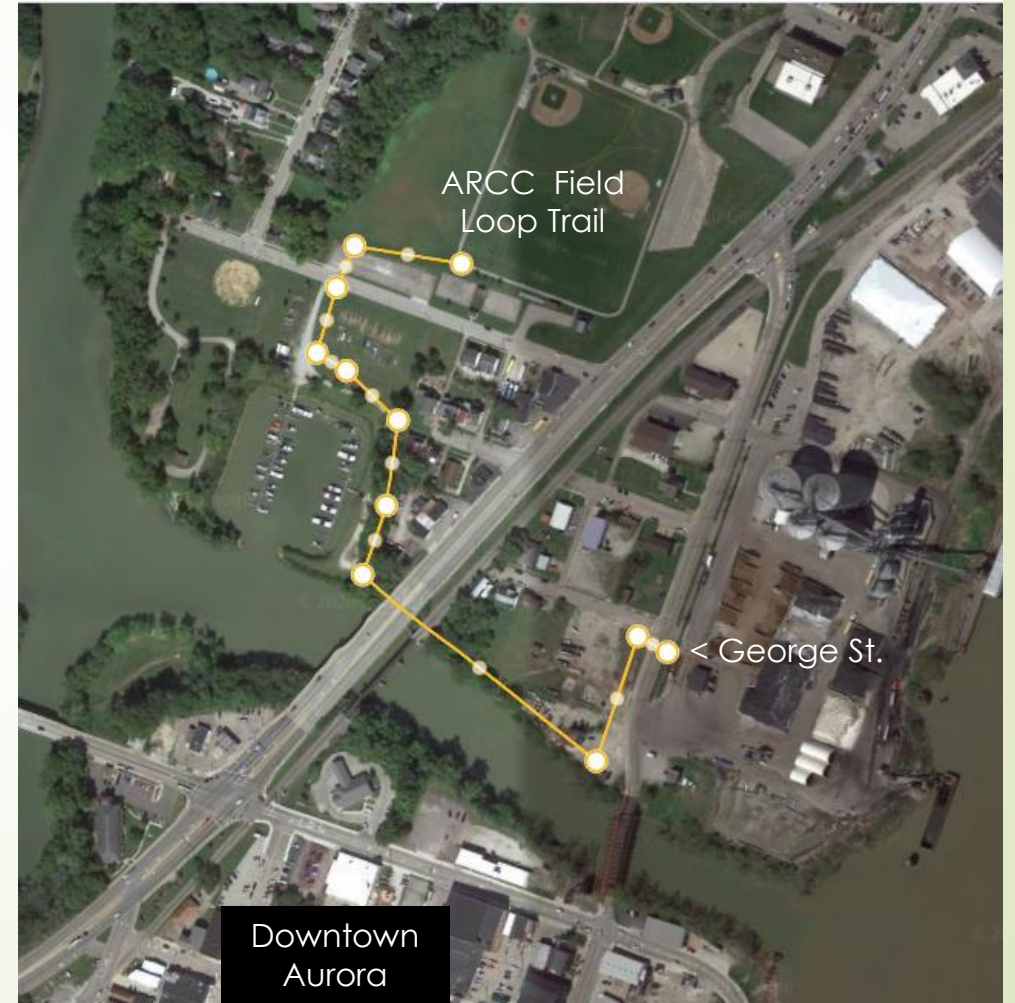


Aurora

Concept for Future Consideration

West Side of US 50 Connector

George St. to Waterways Park &
Taylor Field under US 50 at
Hogan Creek
+/- 0.4 miles

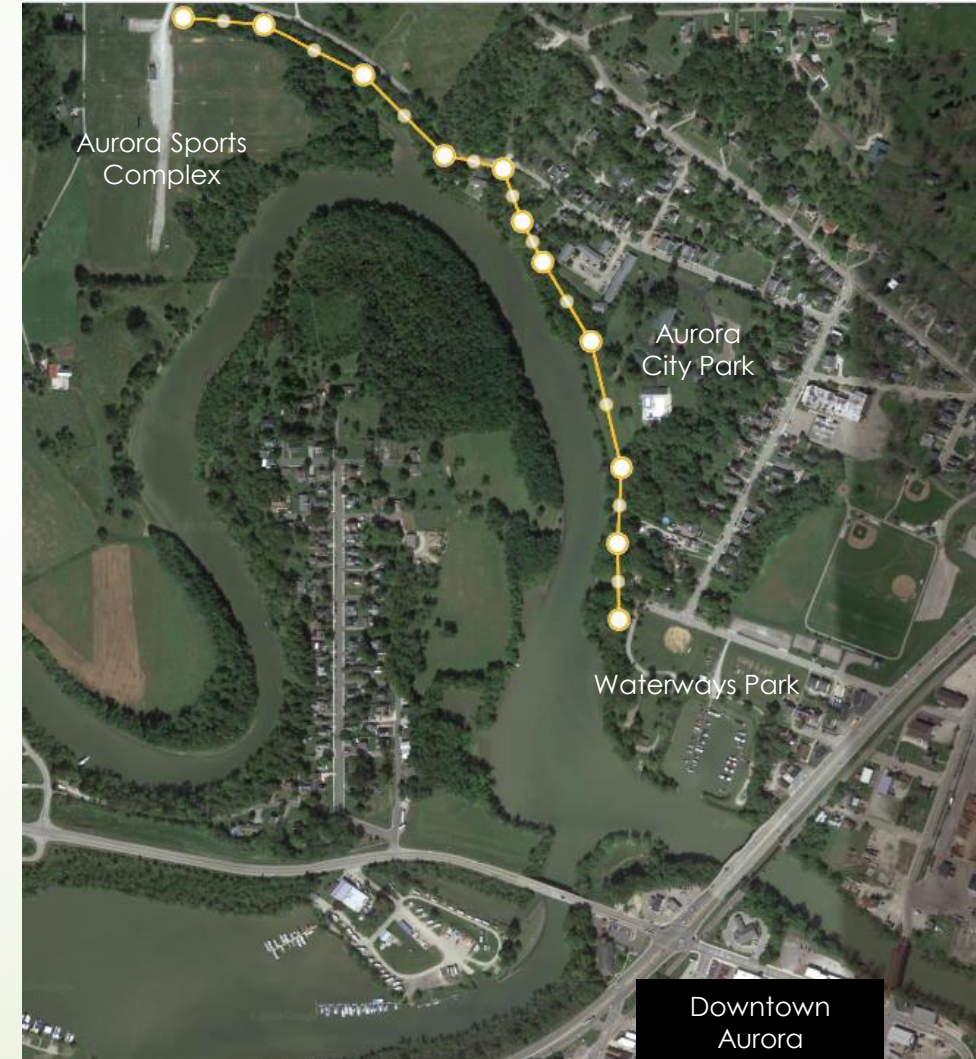


Aurora

Concept for Future Consideration

City Parks Connector Trail

Waterways Park to Aurora City Park
To Aurora Recreation Complex
+/- 0.75 miles



Aurora

Concept for Future Consideration

West Side Connector Trail

Main Street to Hanover Avenue via
Importing St. & SR 350
+/- 0.5 miles



Aurora "Key Gap"

Downtown Connector Linking the Dearborn Trail to Lesko Park

George St. to Lesko Park
As Per Aurora Riverfront Vision Plan
+/- 0.5 miles

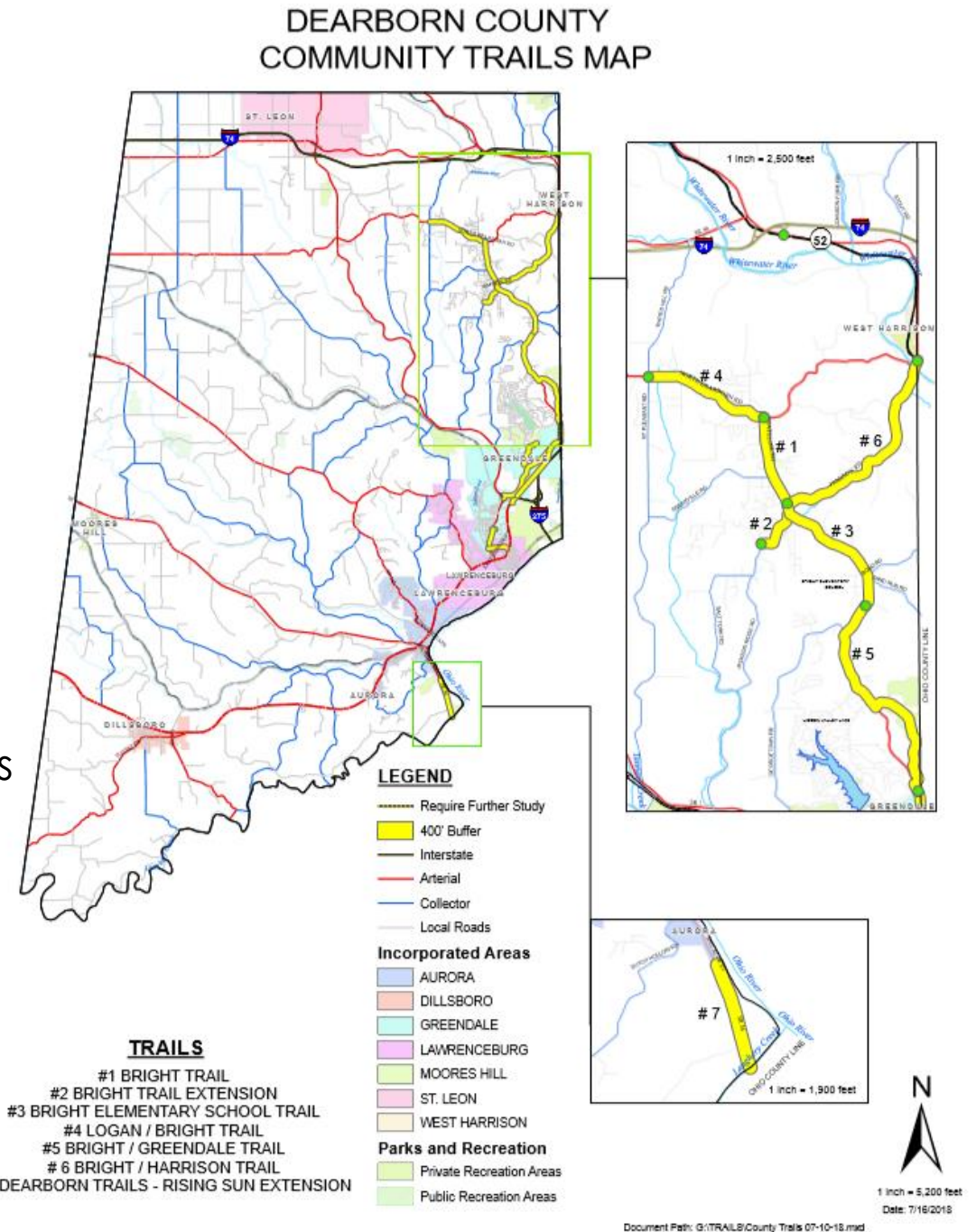


Riverfront Trail Extension:



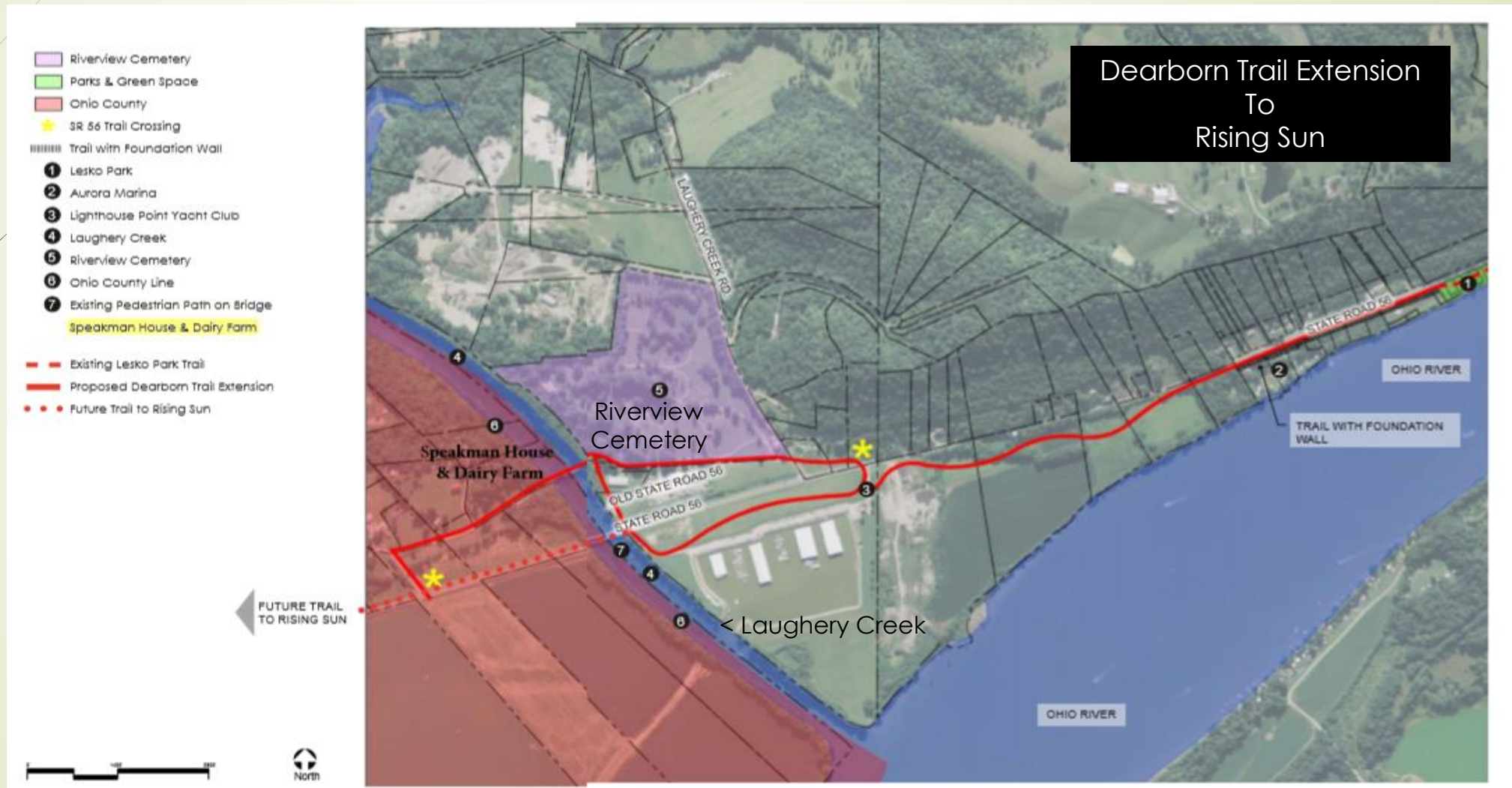
Dearborn County Community Trails Plan

- Trail # 1 Bright Trail - +/- 1.4 miles
- Trail # 2 Bright Trail Extension - +/- 0.8 miles
- Trail # 3 Bright Elementary School Trail - +/- 2.2 miles
- Trail # 4 Logan / Bright Trail - +/- 1.9 miles
- Trail # 5 Bright / Greendale Trail - +/- 3.6 miles
- Trail # 6 Bright / Harrison Trail - +/- 2.9 miles
- Trail # 7 Dearborn Trail – Rising Sun Ext. - +/- 1.25 miles



Dearborn County Community Trails Plan

Trail # 7 Dearborn Trail – Rising Sun Ext.



Other Dearborn County Communities

► Dillsboro

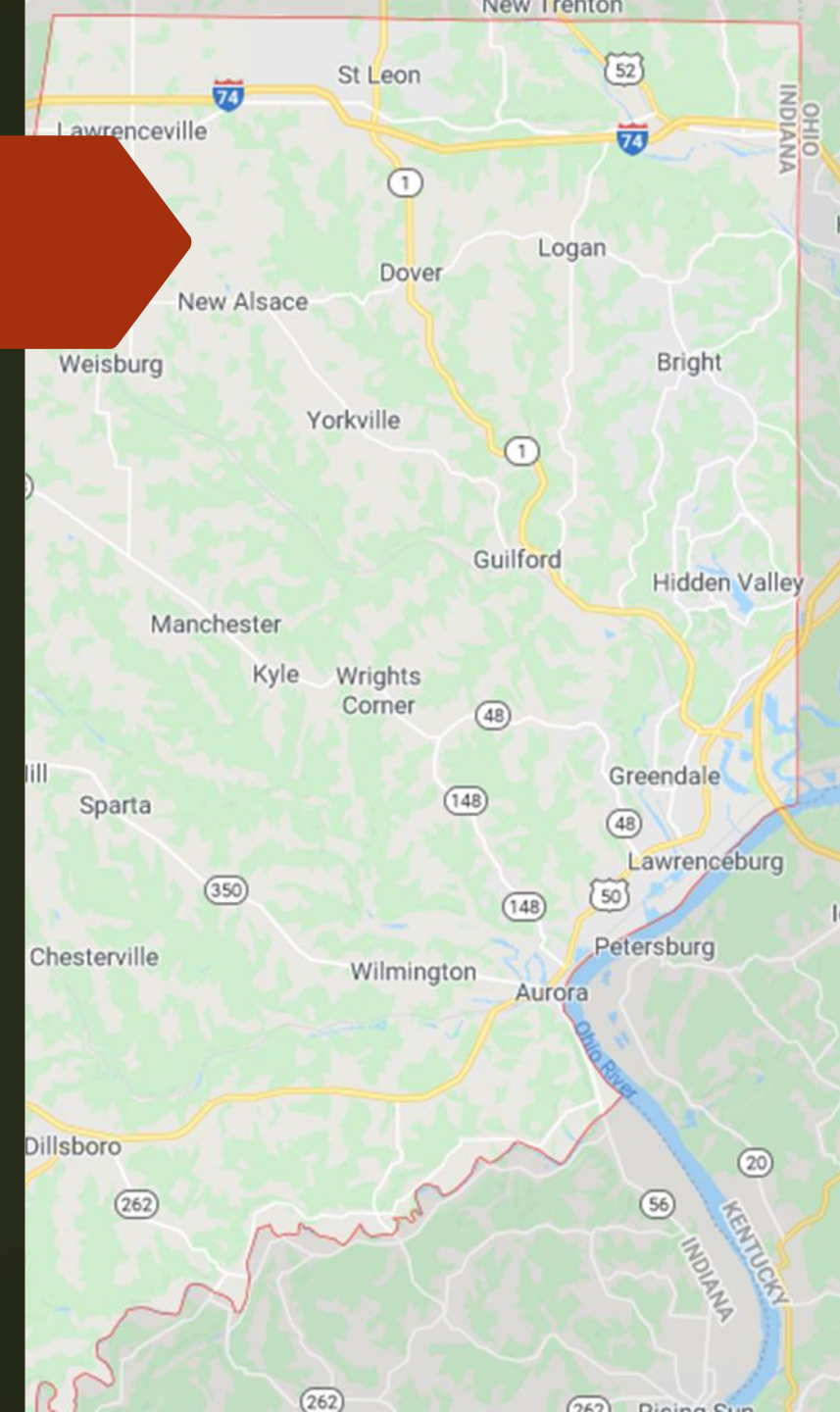
- 1-mile paved multi-use trail
- Paved pathways on private property

► Moores Hill

- 2015 Comprehensive Plan includes strategies for trails

► Hidden Valley Lake

- 2.5 miles of hiking trails



Surrounding Counties

▶ Franklin County

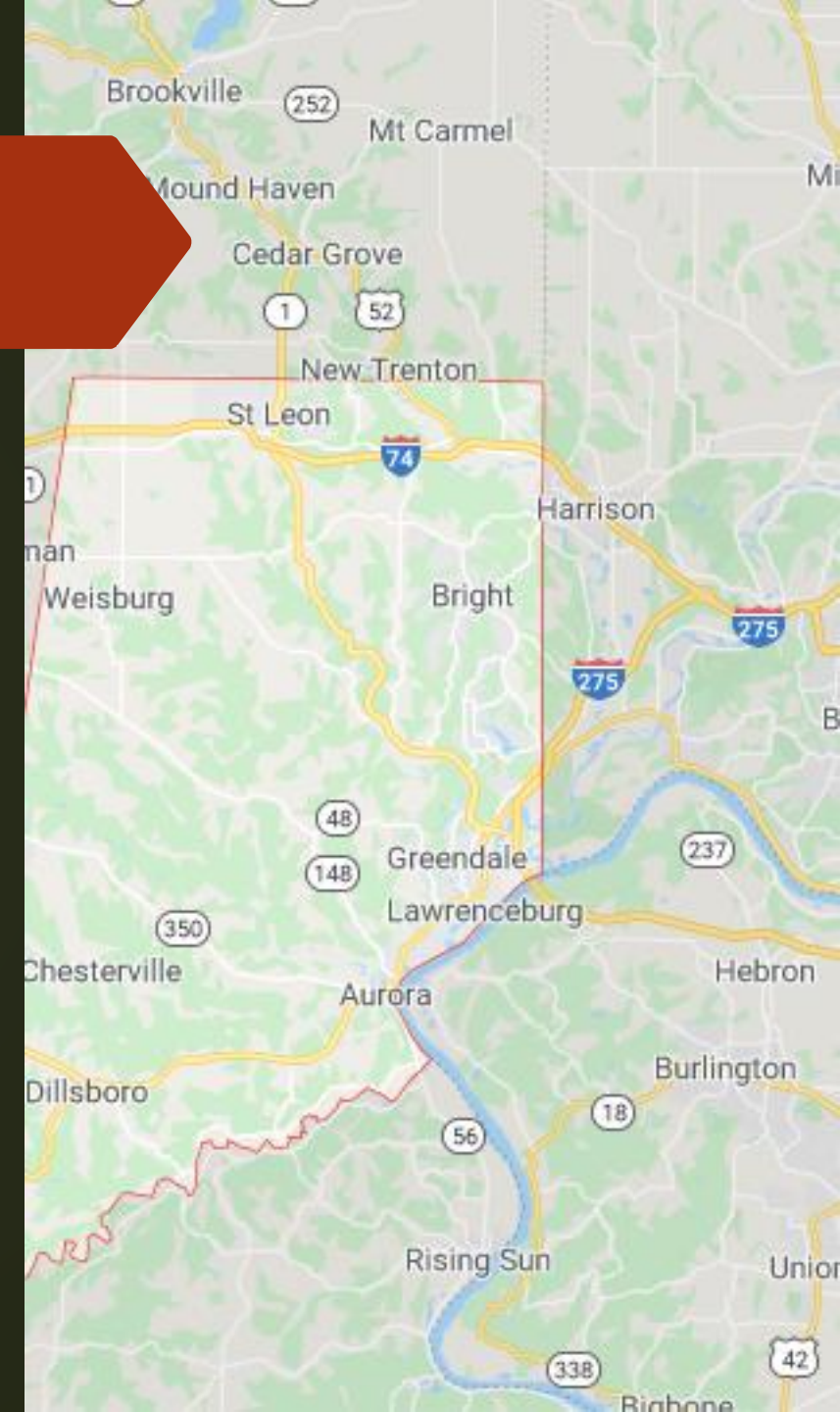
- ▶ Whitewater Canal Trail - +/- 6 miles existing
- ▶ Whitewater Canal Trail - +/- 8 miles proposed
- ▶ Whitewater River Corridor Visionary Trail

▶ Hamilton County, Ohio

- ▶ Miami Whitewater to Shawnee Lookout Trail
- ▶ Ohio River Trail

▶ Ohio & Ripley Counties

- ▶ No plans currently



Recommended Next Steps

- ▶ Complete trail projects in the current “pipeline”
 - ▶ Lawrenceburg & Greendale’s Priority 1 & 2 Projects
- ▶ Develop a Comprehensive Trails Master Plan for Dearborn County
- ▶ Explore creating a regional trail district for Dearborn Trail





Thank You!

